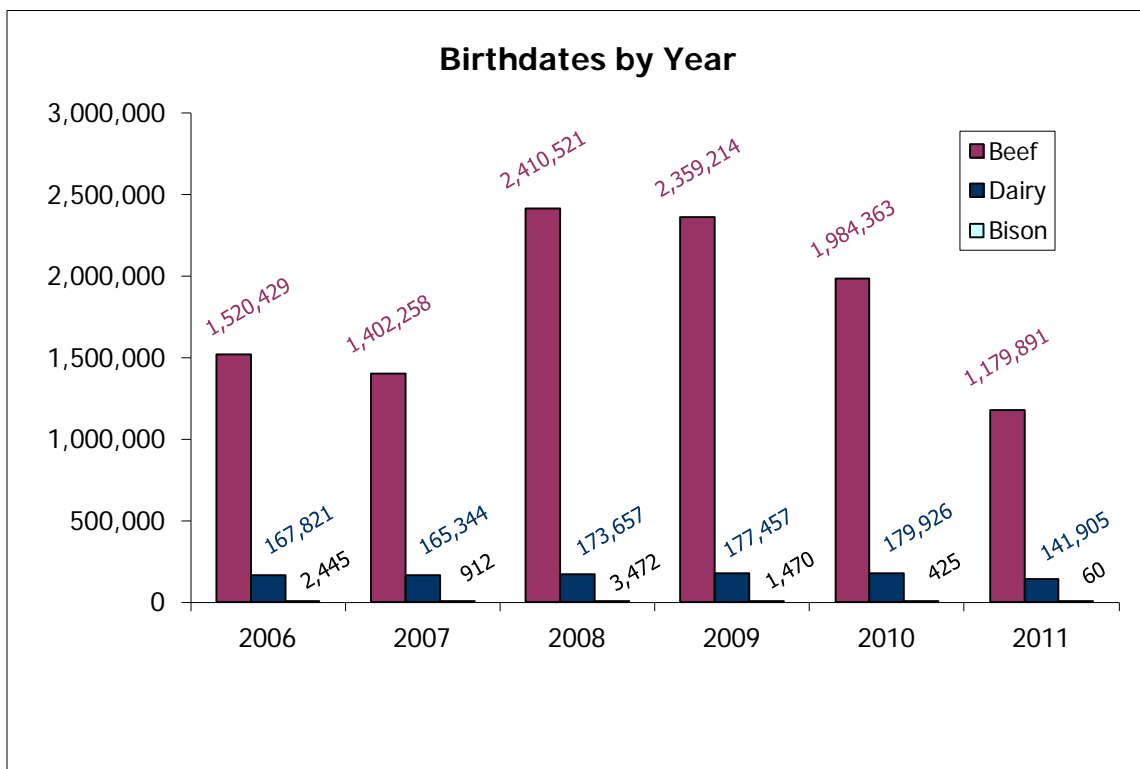
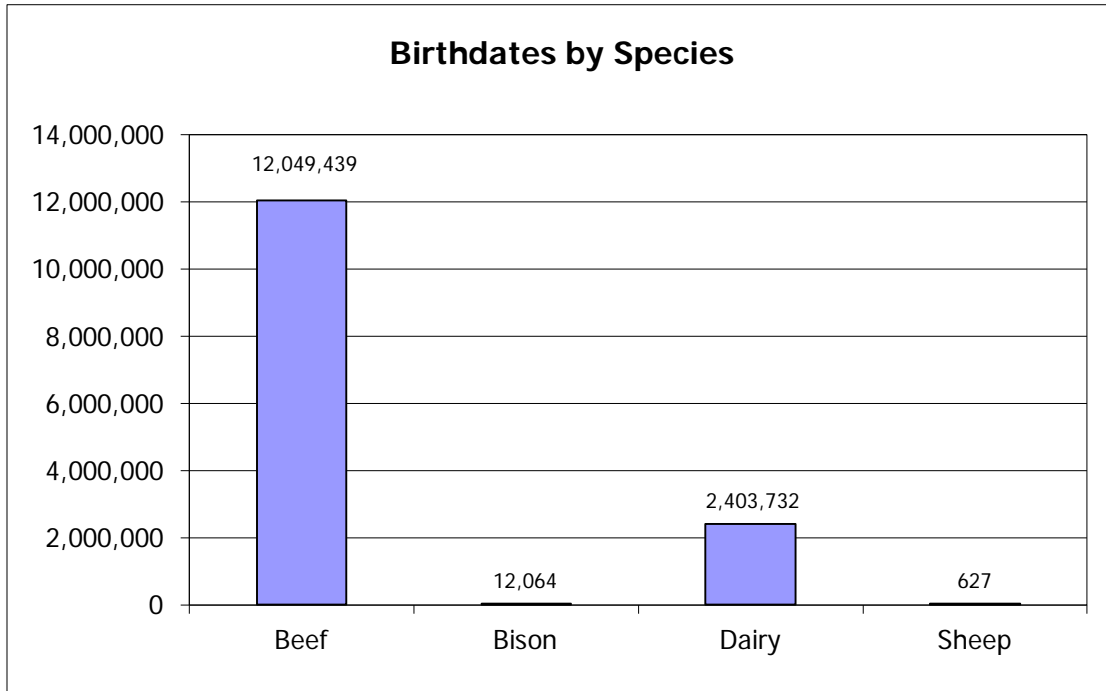
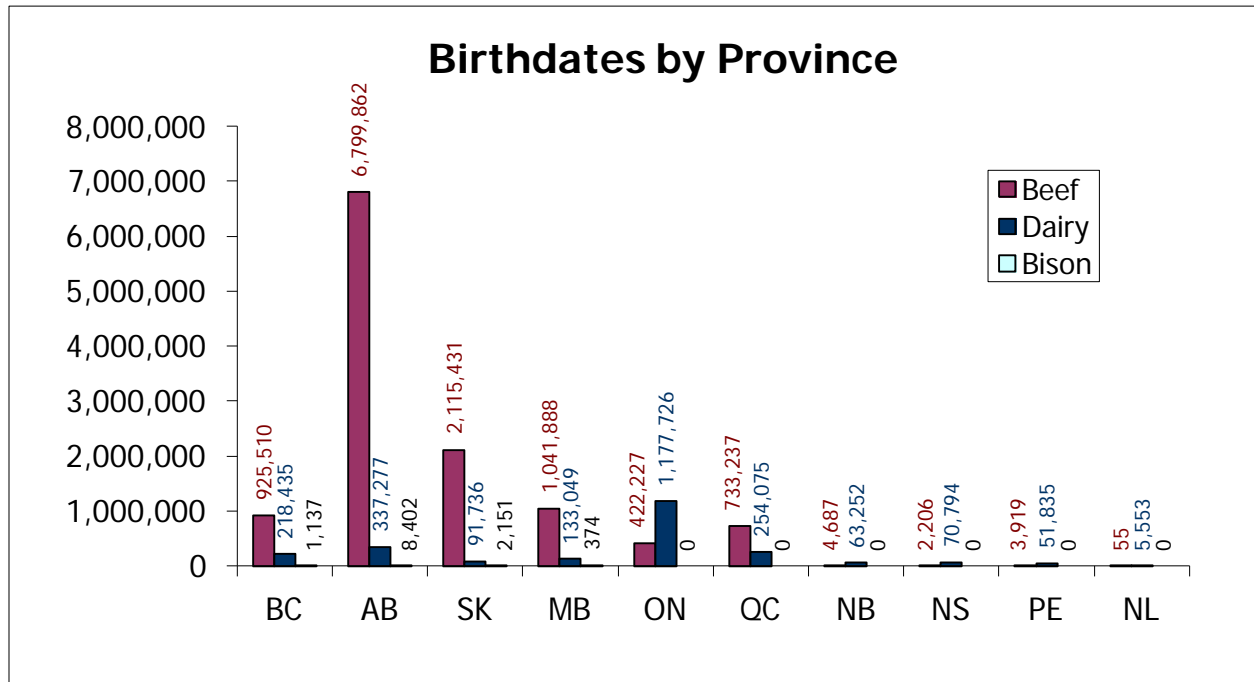


Birthdates in Database 14,465,862



This information is provided for reference purposes only and was accurate at the time of publication. The Canadian Cattle Identification Agency (CCIA) is not responsible for any reliance on this information. Any distribution, duplication or disclosure of this information is strictly prohibited unless expressly authorized by the CCIA.

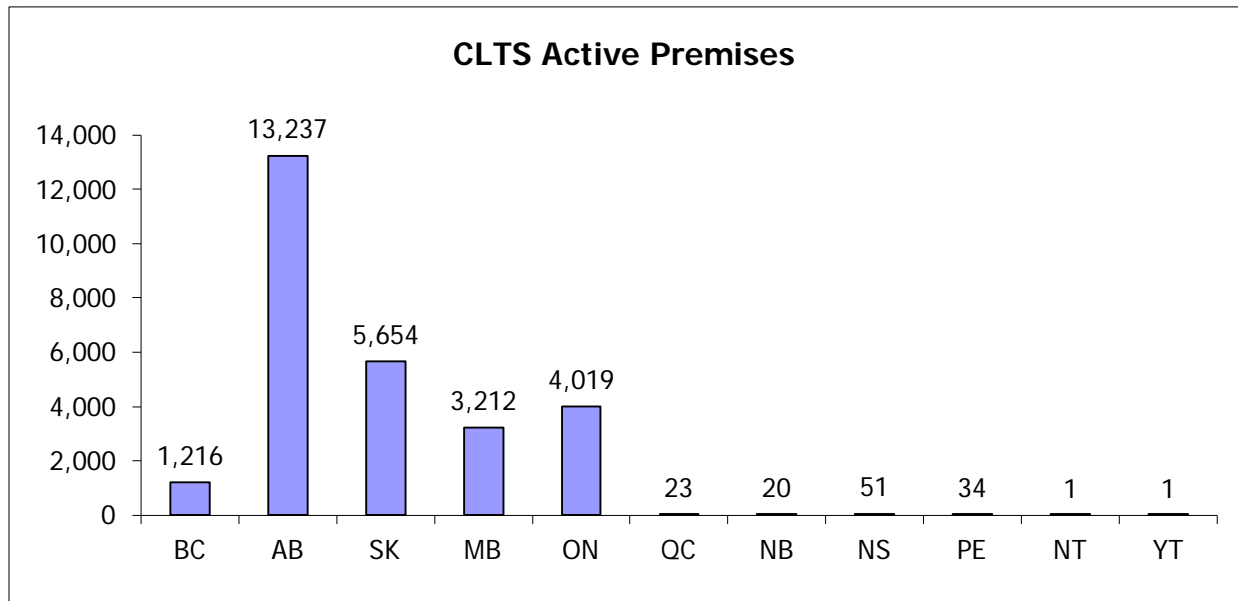


	# of producers age verifying											
	BC				AB				SK			
	2008	2009	2010	2011	2008	2009	2010	2011	2008	2009	2010	2011
Bison	1	0	0	1	31	12	14	7	10	5	3	4
Beef	1795	1920	1780	1588	13934	14097	13812	11674	2357	3689	3430	2257
Dairy	401	391	381	360	462	498	475	450	158	151	130	130

	MB				ON				NB			
	2008	2009	2010	2011	2008	2009	2010	2011	2008	2009	2010	2011
Bison	1	1	1	1	0	0	0	0	0	0	0	0
Beef	1753	3101	3317	2658	1891	1724	1117	1030	19	35	33	17
Dairy	272	260	257	240	3564	3461	3385	3371	182	174	171	170

	NS				PE				NL			
	2008	2009	2010	2011	2008	2009	2010	2011	2008	2009	2010	2011
Bison	0	0	0	0	0	0	0	0	0	0	0	0
Beef	10	18	19	19	14	9	18	17	0	1	0	0
Dairy	184	179	174	163	174	160	159	158	6	9	11	13

This information is provided for reference purposes only and was accurate at the time of publication. The Canadian Cattle Identification Agency (CCIA) is not responsible for any reliance on this information. Any distribution, duplication or disclosure of this information is strictly prohibited unless expressly authorized by the CCIA.



Number of Active Premises Registered in the CLTS- Monthly

Month	BC	AB	SK	MB	ON	QC	NB	NS	PE	NT	YT
As of Dec 31, 2010	1,181	13,086	5,398	3,040	3,746	9	18	48	32	1	1
Jan	4	6	27	51	58	1	0	0	0	0	0
Feb	1	10	11	20	24	0	0	0	1	0	0
Mar	10	11	24	25	60	1	1	0	0	1	0
Apr	0	10	21	24	49	2	0	1	0	0	0
May	0	10	17	30	60	5	0	1	0	0	0
Jun	0	14	12	9	11	0	0	0	0	0	0
Jul	5	7	4	0	4	0	1	0	0	0	0
Aug	3	10	15	1	3	1	0	0	0	0	0
Sept	2	11	27	2	0	2	0	0	0	0	0
Oct	11	17	35	3	1	0	0	0	2	0	0
Nov	4	30	33	5	2	5	0	1	0	0	0
Dec	1	15	30	2	1	1	0	0	0	0	0

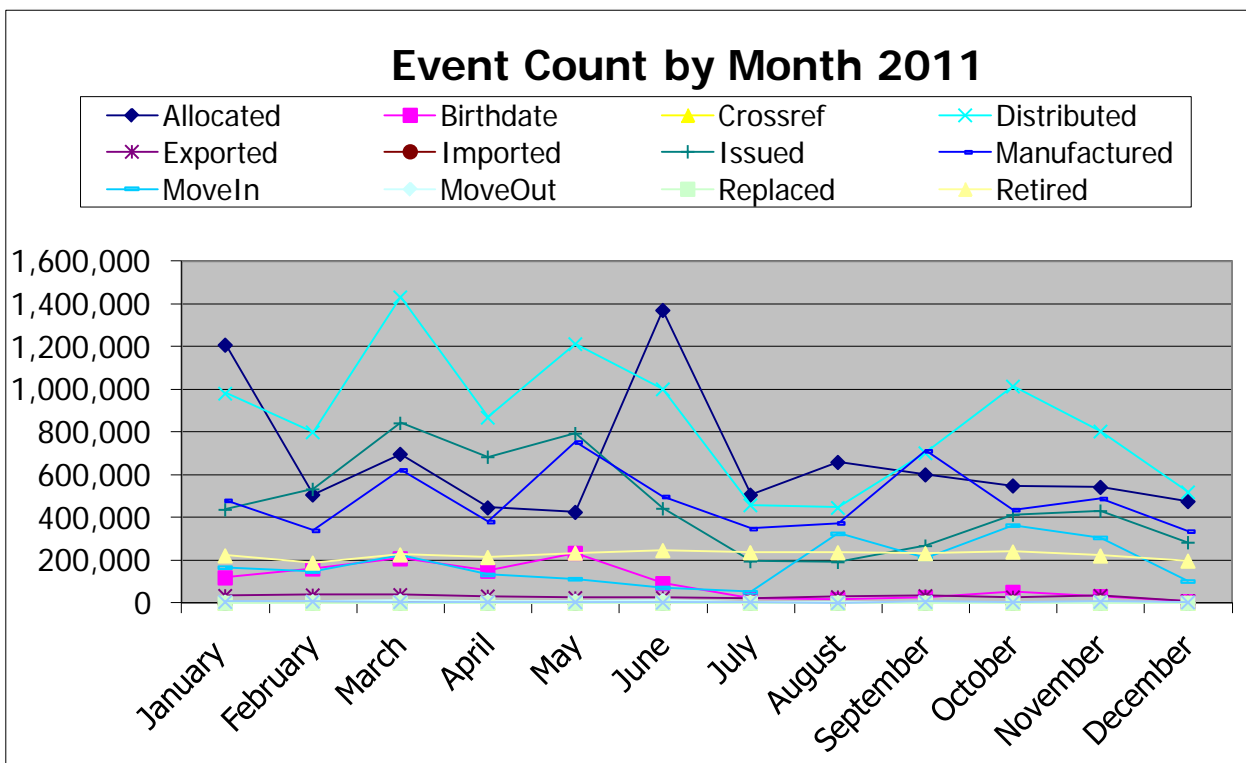
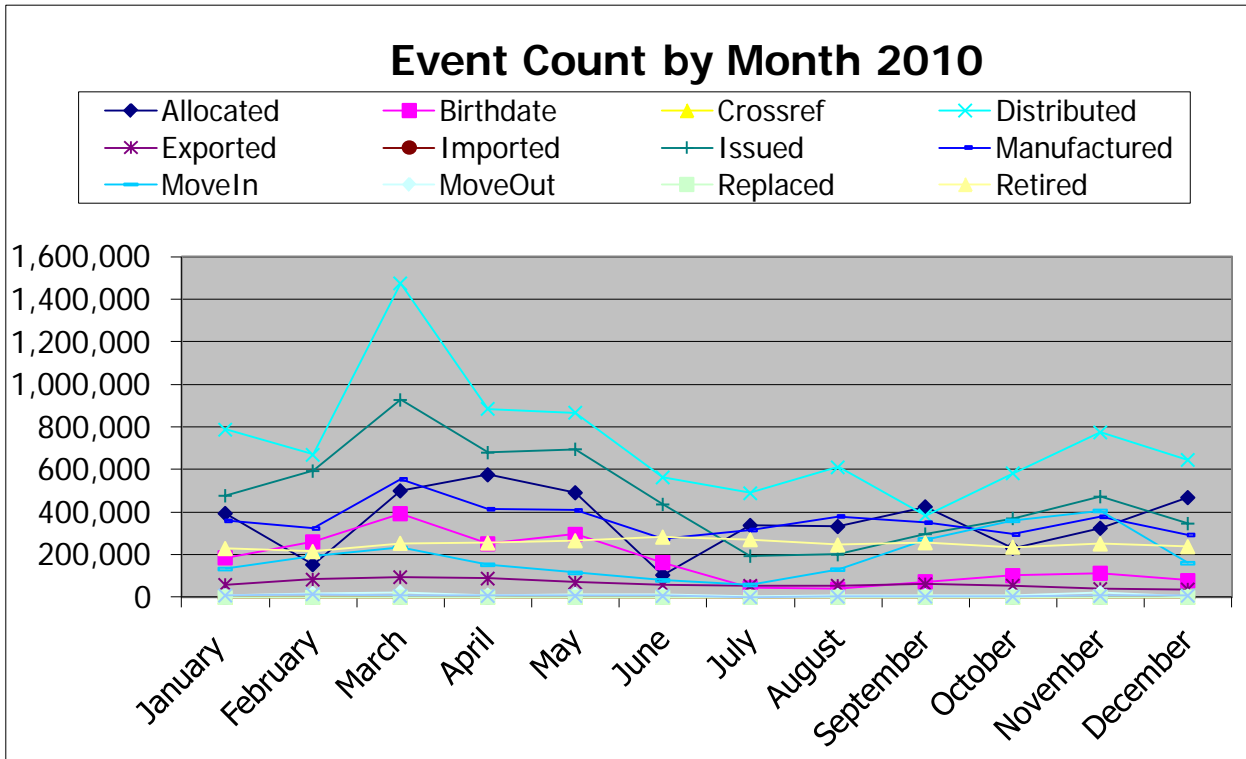
The charts below include both dairy and beef calves.

Region	Stats Canada # of 2008 calves as of July 1, 2008	CLTS # of 2008 calves AV'd as of Dec 31, 2011	% of herd Age Verified
BC	270,000	202,479	74.99%
AB	2,002,000	1,578,247	78.83%
SK	1,346,000	337,460	25.07%
MB	575,000	196,176	34.12%
ON	498,500	184,752	37.06%
NB	23,900	5,532	23.15%
NS	28,300	5,578	19.71%
PE	19,300	4,709	24.40%
NL	2,600	603	23.19%
Canada	4,765,600	2,515,536	52.79%

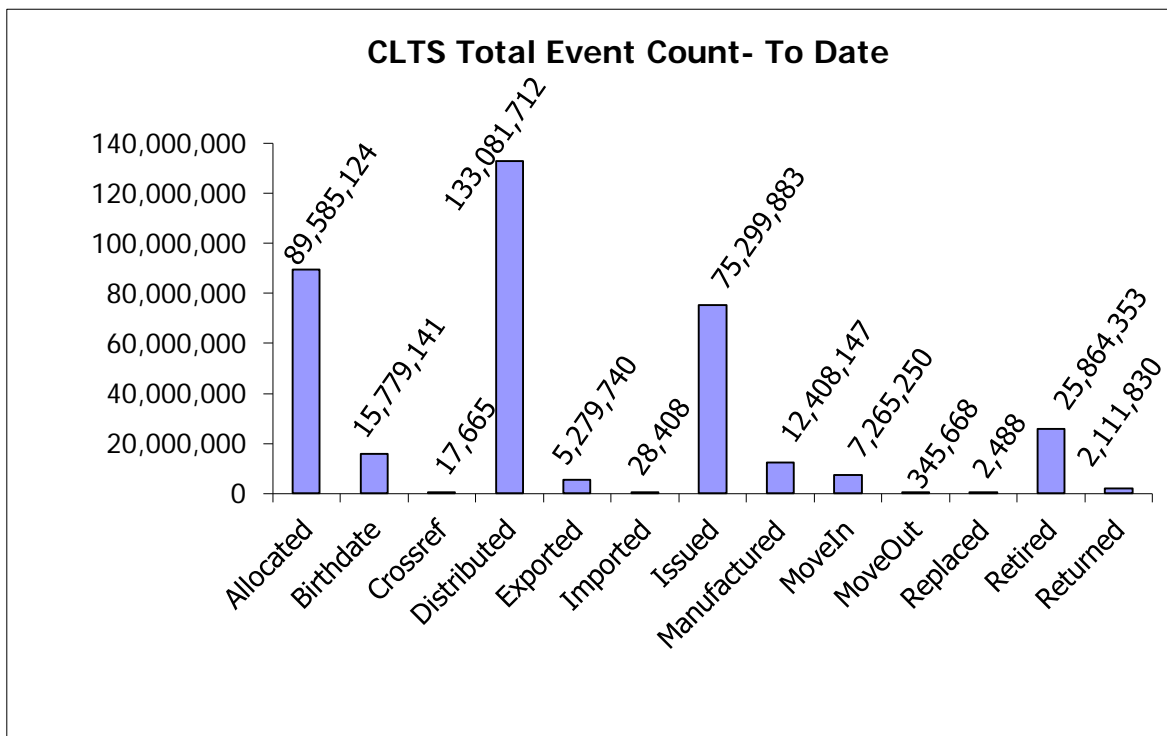
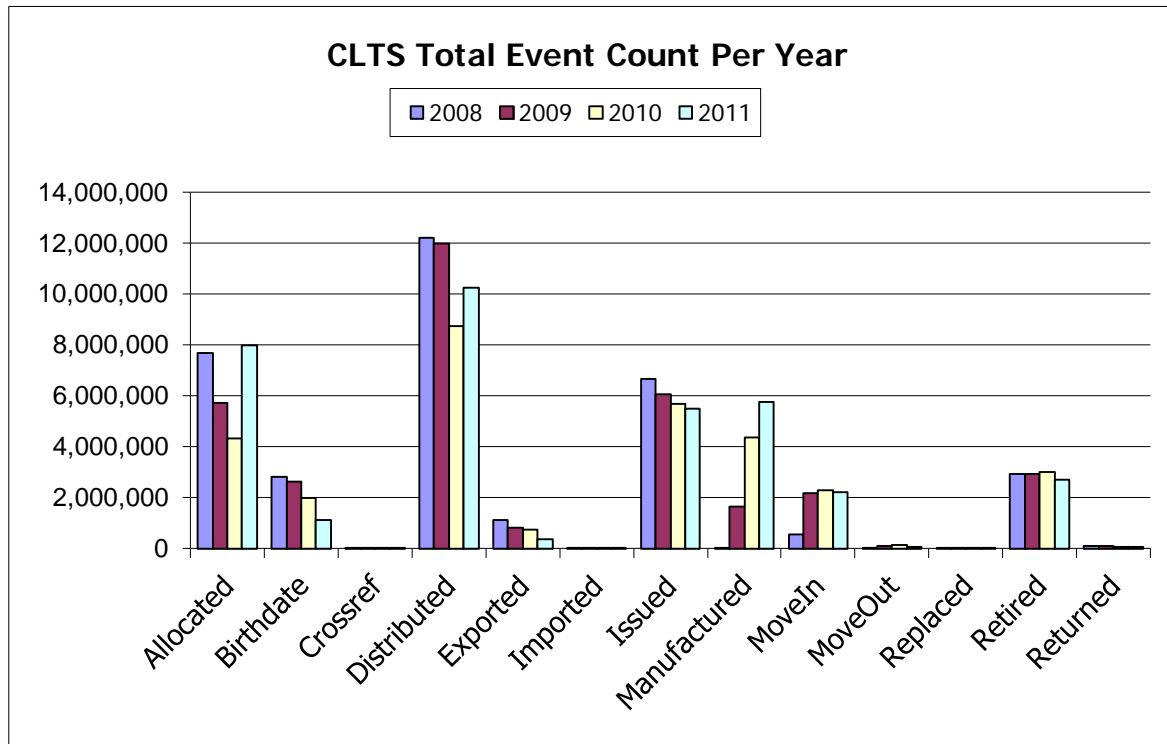
Region	Stats Canada # of 2009 calves as of July 1, 2009	CLTS # of 2009 calves AV'd as of Dec 31, 2011	% of herd Age Verified
BC	246,000	172,966	70.31%
AB	1,935,000	1,425,717	73.68%
SK	1,257,000	478,811	38.09%
MB	527,000	261,334	49.59%
ON	460,300	158,845	34.51%
NB	22,000	6,198	28.17%
NS	22,000	5,221	23.73%
PE	18,000	5,181	28.78%
NL	2,600	774	29.77%
Canada	4,489,900	2,515,047	56.02%

Region	Stats Canada # of 2010 calves as of July 1, 2010	CLTS # of 2010 calves AV'd as of Dec 31, 2011	% of herd Age Verified
BC	229,200	161,465	70.45%
AB	1,855,000	1,234,296	66.54%
SK	1,181,000	350,748	29.70%
MB	486,000	211,687	43.56%
ON	458,900	140,923	30.71%
NB	23,000	5,943	25.84%
NS	20,000	5,593	27.97%
PE	16,000	4,986	31.16%
NL	2,400	1,126	46.92%
Canada	4,271,500	2,116,767	49.56%

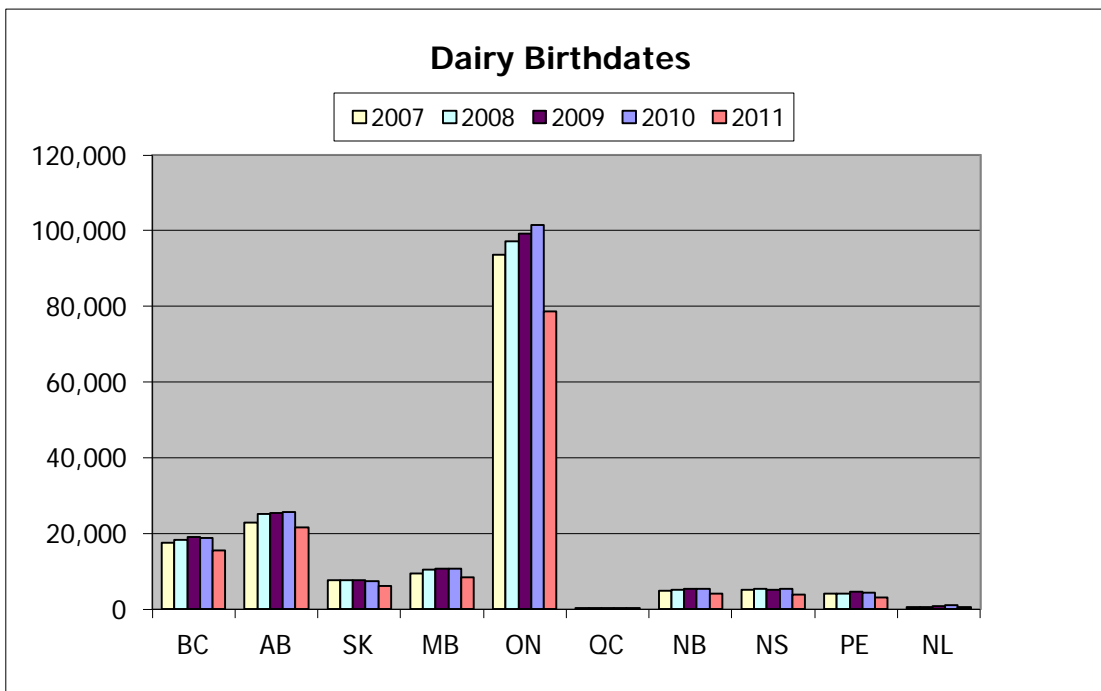
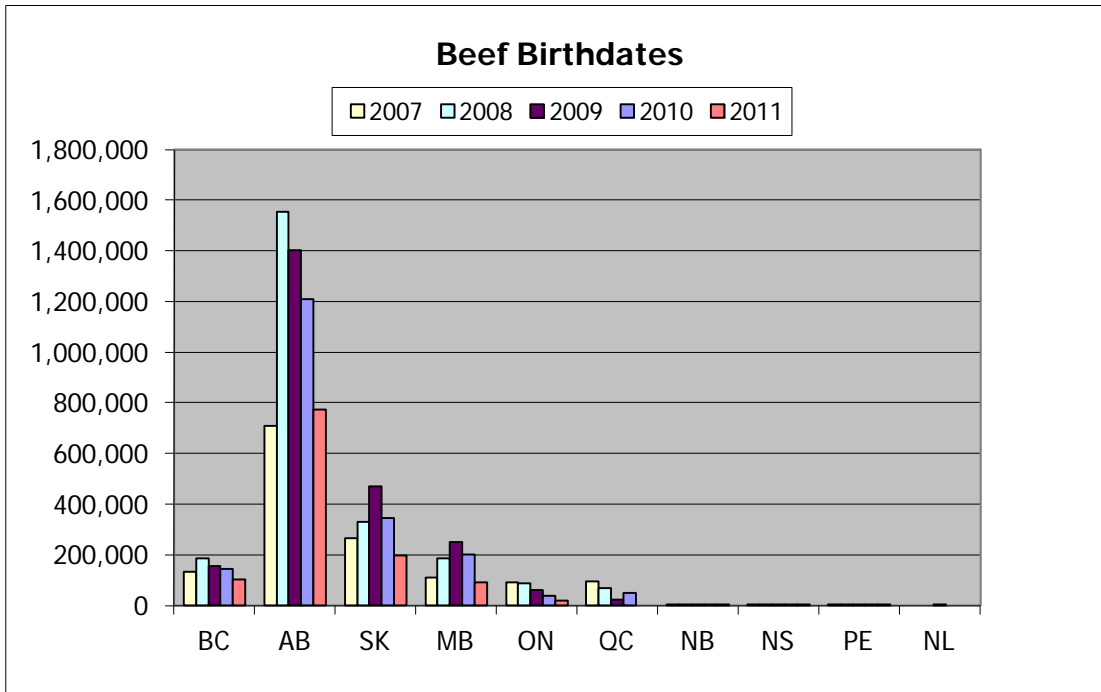
Region	Stats Canada # of 2011 calves as of July 1, 2011	CLTS # of 2011 calves AV'd as of Dec 31, 2011	% of herd Age Verified
BC	228,700	116,008	50.72%
AB	1,868,600	794,307	42.51%
SK	1,176,400	201,452	17.12%
MB	490,800	99,868	20.35%
ON	499,700	97,964	19.60%
NB	22,000	4,578	20.81%
NS	24,000	3,956	16.48%
PE	17,700	3,104	17.54%
NL	2,400	507	21.13%
Canada	4,330,300	1,321,744	30.52%



This information is provided for reference purposes only and was accurate at the time of publication. The Canadian Cattle Identification Agency (CCIA) is not responsible for any reliance on this information. Any distribution, duplication or disclosure of this information is strictly prohibited unless expressly authorized by the CCIA.



This information is provided for reference purposes only and was accurate at the time of publication. The Canadian Cattle Identification Agency (CCIA) is not responsible for any reliance on this information. Any distribution, duplication or disclosure of this information is strictly prohibited unless expressly authorized by the CCIA.



This information is provided for reference purposes only and was accurate at the time of publication. The Canadian Cattle Identification Agency (CCIA) is not responsible for any reliance on this information. Any distribution, duplication or disclosure of this information is strictly prohibited unless expressly authorized by the CCIA.

2010/2011 Birth Date Comparison

Beef Stats as of Dec 31, 2010				
	2007	2008	2009	2010
BC	130,858	184,408	152,024	124,746
AB	706,767	1,552,919	1,388,355	894,279
SK	267,173	329,570	469,946	252,493
MB	107,349	183,727	245,914	112,353
ON	90,234	87,410	58,382	22,533
QC	28,417	4,300	801	8
NB	455	498	694	608
NS	311	350	211	188
PE	846	576	666	209
NL	0	0	1	0

Beef Stats as of Dec 31, 2011					
	2007	2008	2009	2010	2011
BC	130,797	184,225	153,814	142,758	100,431
AB	708,851	1,553,049	1,400,375	1,208,767	772,767
SK	266,442	329,850	471,277	343,348	195,264
MB	109,458	185,779	250,793	201,014	91,375
ON	90,584	87,552	59,586	39,315	19,363
QC	94,509	68,286	21,590	47,441	0
NB	459	519	813	730	429
NS	312	353	248	359	131
PE	846	584	717	575	94
NL	0	0	1	0	0

Dairy Stats as of Dec 31, 2010				
	2007	2008	2009	2010
BC	17,382	18,237	18,957	14,128
AB	22,819	25,116	25,179	20,119
SK	6,929	6,838	6,804	4,965
MB	9,403	10,095	10,191	7,943
ON	93,327	96,511	97,352	72,438
QC	15	11	7	2
NB	4,727	4,978	5,244	3,648
NS	5,139	5,210	4,930	3,586
PE	3,955	4,083	4,336	2,878
NL	436	328	376	268

Dairy Stats as of Dec 31, 2011					
	2007	2008	2009	2010	2011
BC	17,383	18,254	19,152	18,707	15,577
AB	22,880	25,198	25,342	25,529	21,540
SK	7,524	7,610	7,534	7,400	6,188
MB	9,476	10,397	10,541	10,673	8,493
ON	93,632	97,200	99,259	101,608	78,601
QC	39	32	34	25	15
NB	4,740	5,013	5,385	5,213	4,149
NS	5,156	5,225	4,973	5,234	3,825
PE	3,969	4,125	4,464	4,411	3,010
NL	545	603	773	1,126	507