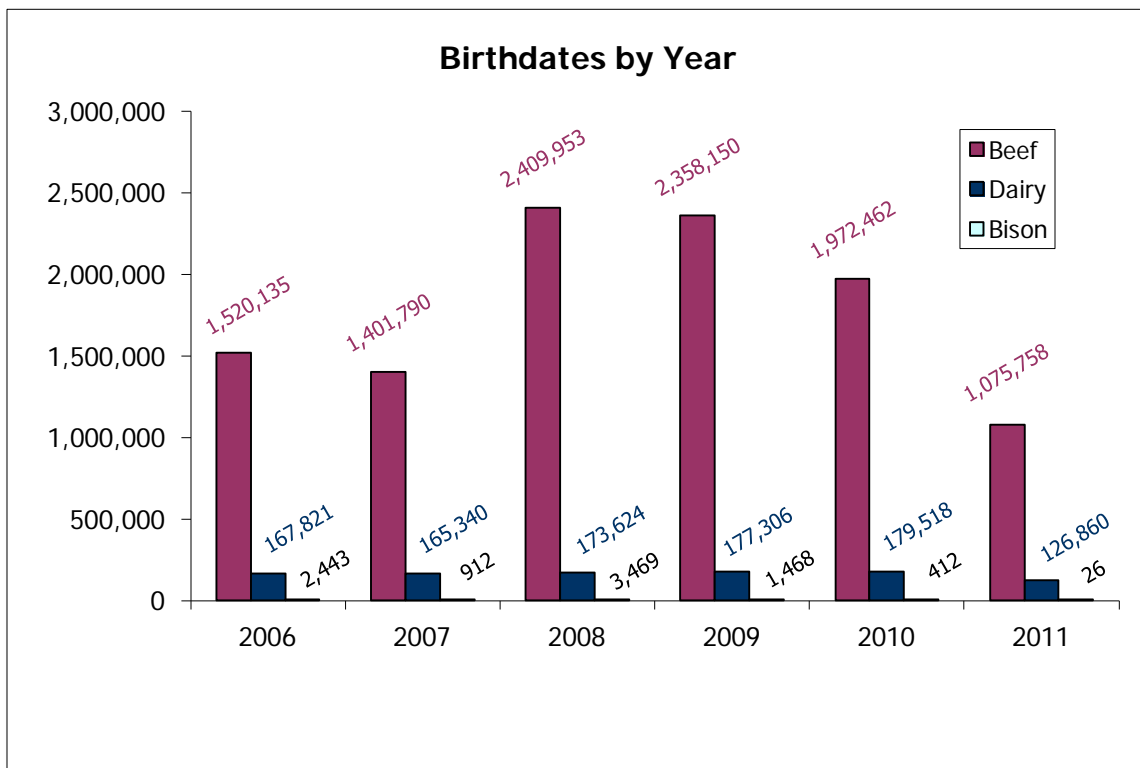
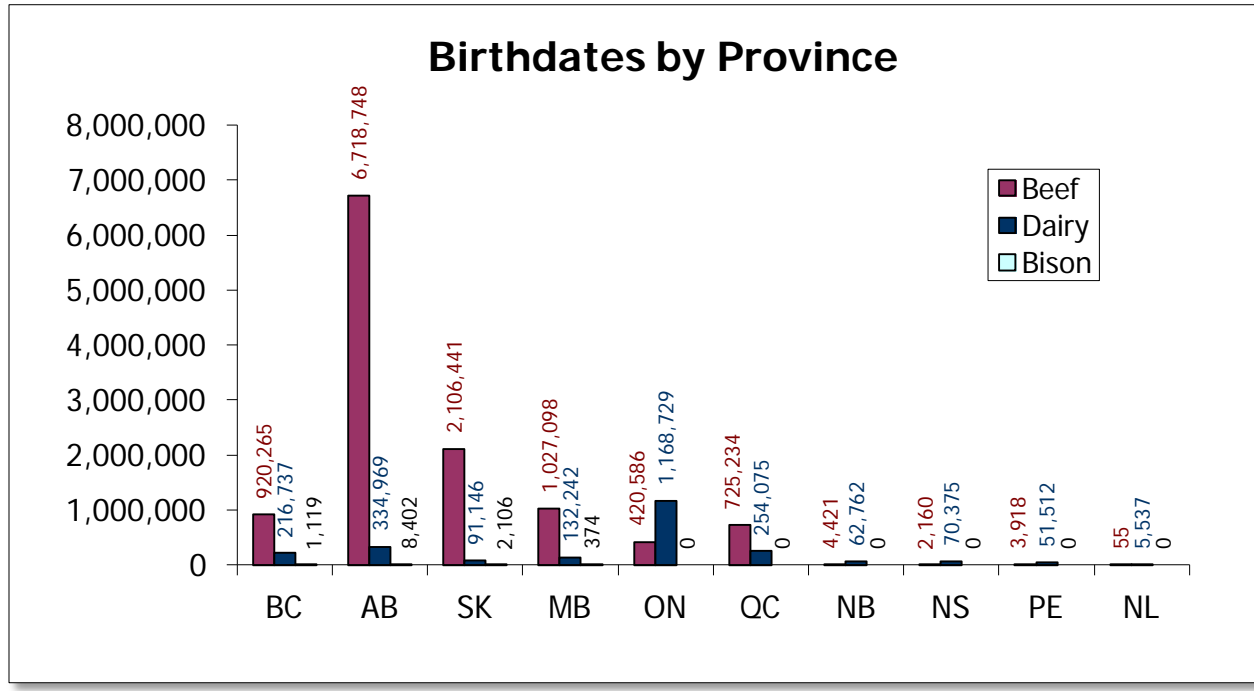


Birthdates in Database 14,330,055



This information is provided for reference purposes only and was accurate at the time of publication. The Canadian Cattle Identification Agency (CCIA) is not responsible for any reliance on this information. Any distribution, duplication or disclosure of this information is strictly prohibited unless expressly authorized by the CCIA.

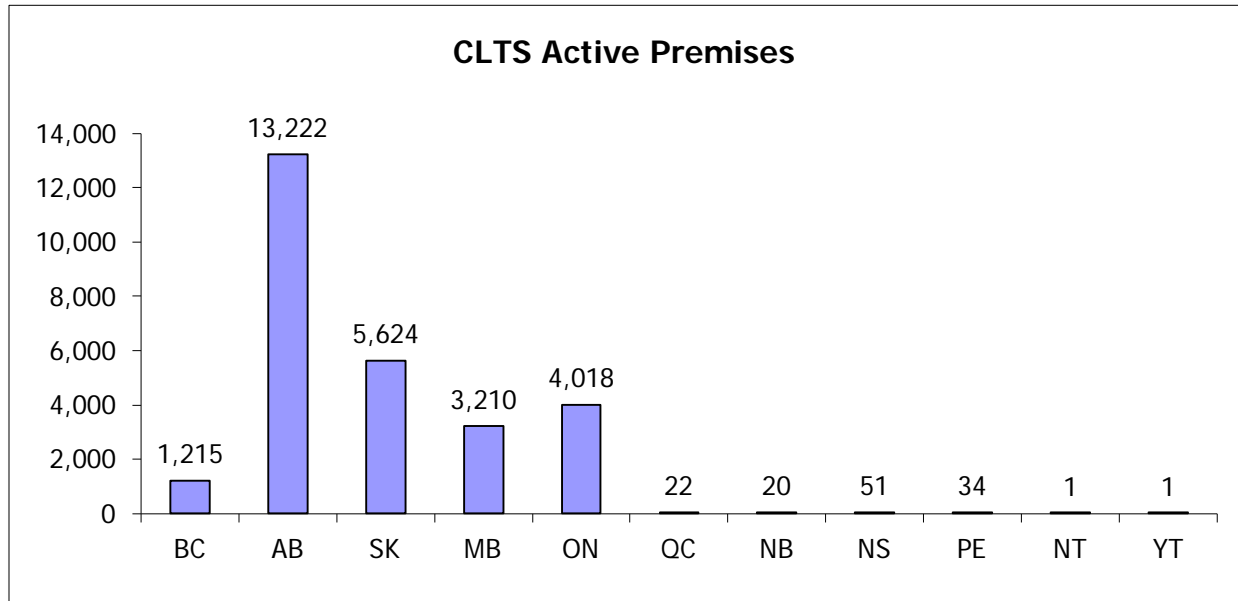


	# of producers age verifying											
	BC				AB				SK			
	2008	2009	2010	2011	2008	2009	2010	2011	2008	2009	2010	2011
Bison	1	0	0	0	31	12	14	7	10	5	3	2
Beef	1795	1920	1780	1554	13934	14097	13812	11093	2357	3689	3430	2192
Dairy	401	391	381	357	462	498	475	446	158	151	130	128

	MB				ON				NB			
	2008	2009	2010	2011	2008	2009	2010	2011	2008	2009	2010	2011
Bison	1	1	1	1	0	0	0	0	0	0	0	0
Beef	1753	3101	3317	2599	1891	1724	1117	1003	19	35	33	15
Dairy	272	260	257	235	3564	3461	3385	3347	182	174	171	170

	NS				PE				NL			
	2008	2009	2010	2011	2008	2009	2010	2011	2008	2009	2010	2011
Bison	0	0	0	0	0	0	0	0	0	0	0	0
Beef	10	18	19	18	14	9	18	17	0	1	0	0
Dairy	184	179	174	163	174	160	159	157	6	9	11	13

This information is provided for reference purposes only and was accurate at the time of publication. The Canadian Cattle Identification Agency (CCIA) is not responsible for any reliance on this information. Any distribution, duplication or disclosure of this information is strictly prohibited unless expressly authorized by the CCIA.



Number of Active Premises Registered in the CLTS- Monthly											
Month	BC	AB	SK	MB	ON	QC	NB	NS	PE	NT	YT
As of Dec 31, 2010	1,181	13,086	5,398	3,040	3,746	9	18	48	32	1	1
Jan	4	6	27	51	58	1	0	0	0	0	0
Feb	1	10	11	20	24	0	0	0	1	0	0
Mar	10	11	24	25	60	1	1	0	0	1	0
Apr	0	10	21	24	49	2	0	1	0	0	0
May	0	10	17	30	60	5	0	1	0	0	0
Jun	0	14	12	9	11	0	0	0	0	0	0
Jul	5	7	4	0	4	0	1	0	0	0	0
Aug	3	10	15	1	3	1	0	0	0	0	0
Sept	2	11	27	2	0	2	0	0	0	0	0
Oct	11	17	35	3	1	0	0	0	2	0	0
Nov	4	30	33	5	2	5	0	1	0	0	0

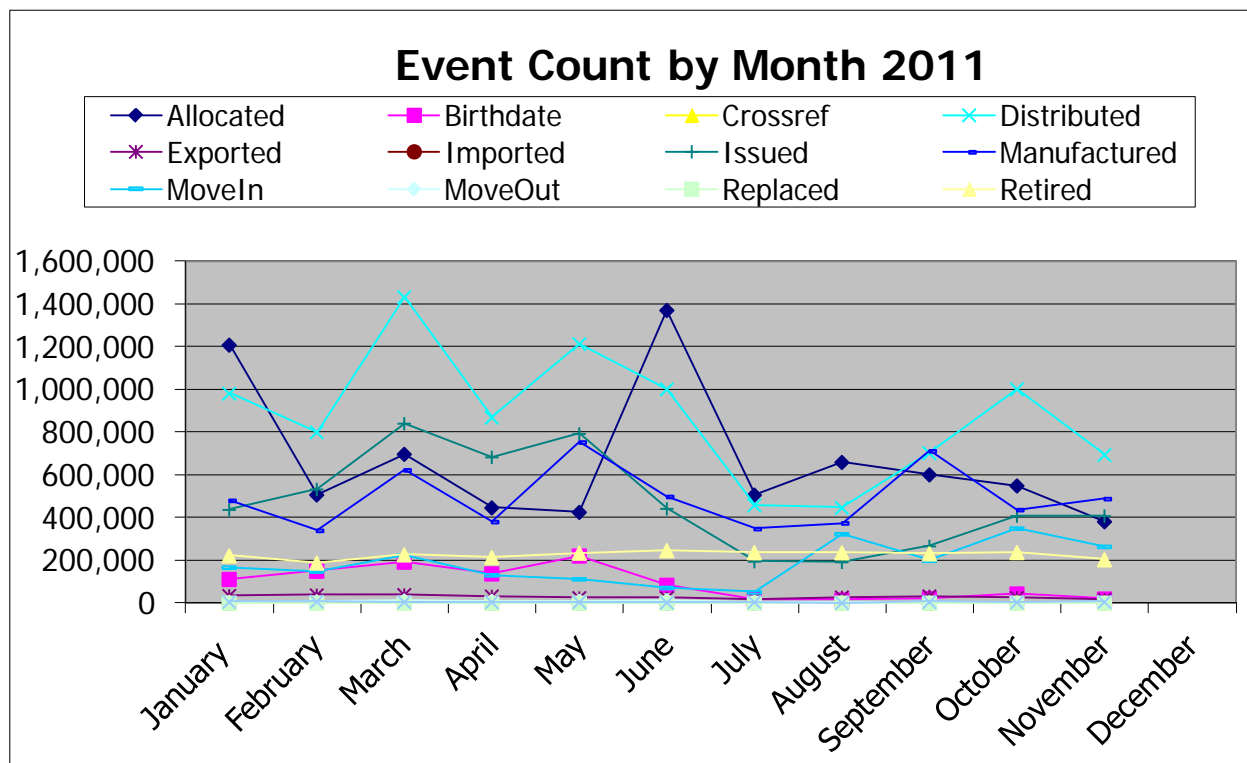
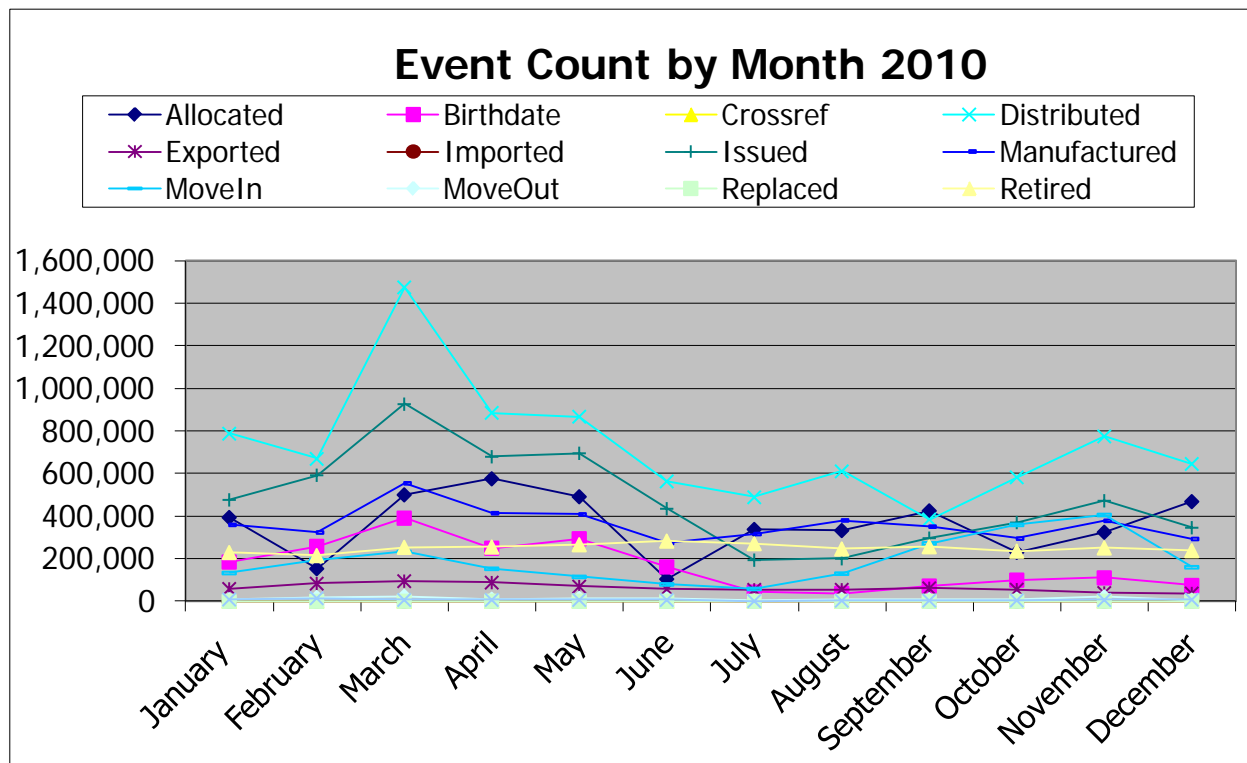
The charts below include both dairy and beef calves.

Region	Stats Canada # of 2008 calves as of July 1, 2008	CLTS # of 2008 calves AV'd as of Nov 30, 2011	% of herd Age Verified
BC	270,000	202,475	74.99%
AB	2,002,000	1,578,073	78.82%
SK	1,346,000	337,457	25.07%
MB	575,000	195,888	34.07%
ON	498,500	184,737	37.06%
NB	23,900	5,518	23.09%
NS	28,300	5,577	19.71%
PE	19,300	4,709	24.40%
NL	2,600	603	23.19%
Canada	4,765,600	2,515,037	52.77%

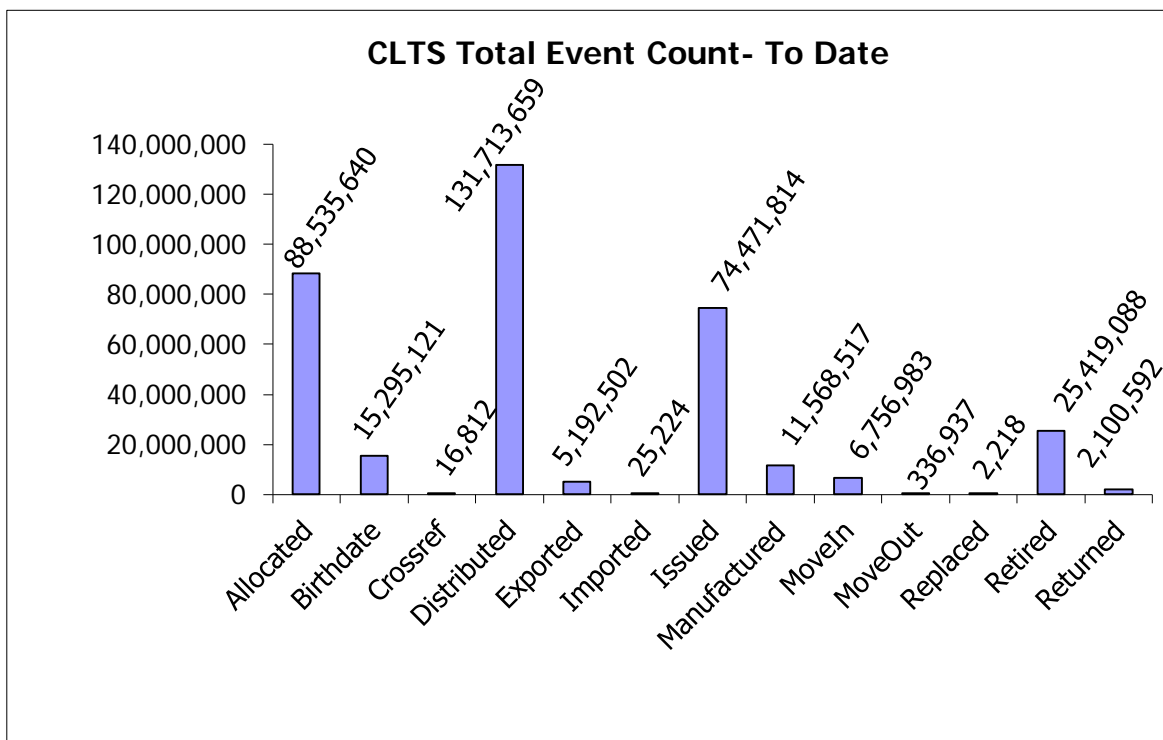
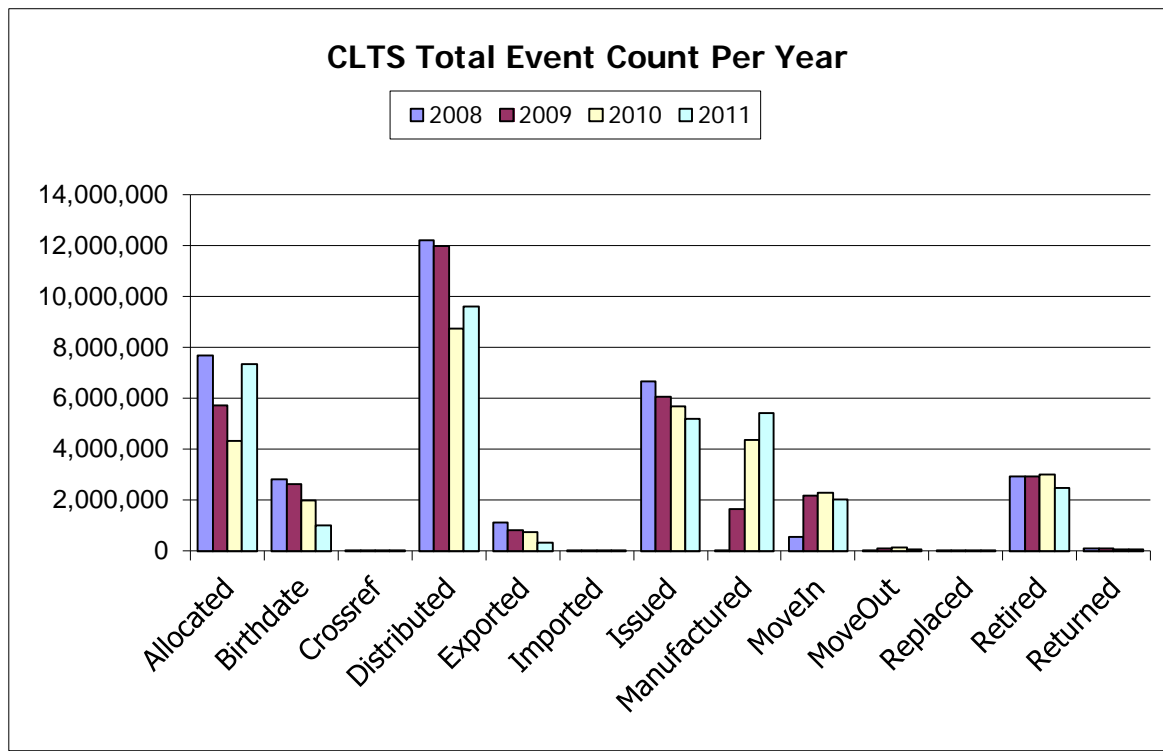
Region	Stats Canada # of 2009 calves as of July 1, 2009	CLTS # of 2009 calves AV'd as of Nov 30, 2011	% of herd Age Verified
BC	246,000	172,948	70.30%
AB	1,935,000	1,425,233	73.66%
SK	1,257,000	478,800	38.09%
MB	527,000	260,984	49.52%
ON	460,300	158,765	34.49%
NB	22,000	6,156	27.98%
NS	22,000	5,219	23.72%
PE	18,000	5,180	28.78%
NL	2,600	774	29.77%
Canada	4,489,900	2,514,059	55.99%

Region	Stats Canada # of 2010 calves as of July 1, 2010	CLTS # of 2010 calves AV'd as of Nov 30, 2011	% of herd Age Verified
BC	229,200	161,286	70.37%
AB	1,855,000	1,231,951	66.41%
SK	1,181,000	350,322	29.66%
MB	486,000	210,377	43.29%
ON	458,900	140,466	30.61%
NB	23,000	5,933	25.80%
NS	20,000	5,585	27.93%
PE	16,000	4,983	31.14%
NL	2,400	1,126	46.92%
Canada	4,271,500	2,112,029	49.44%

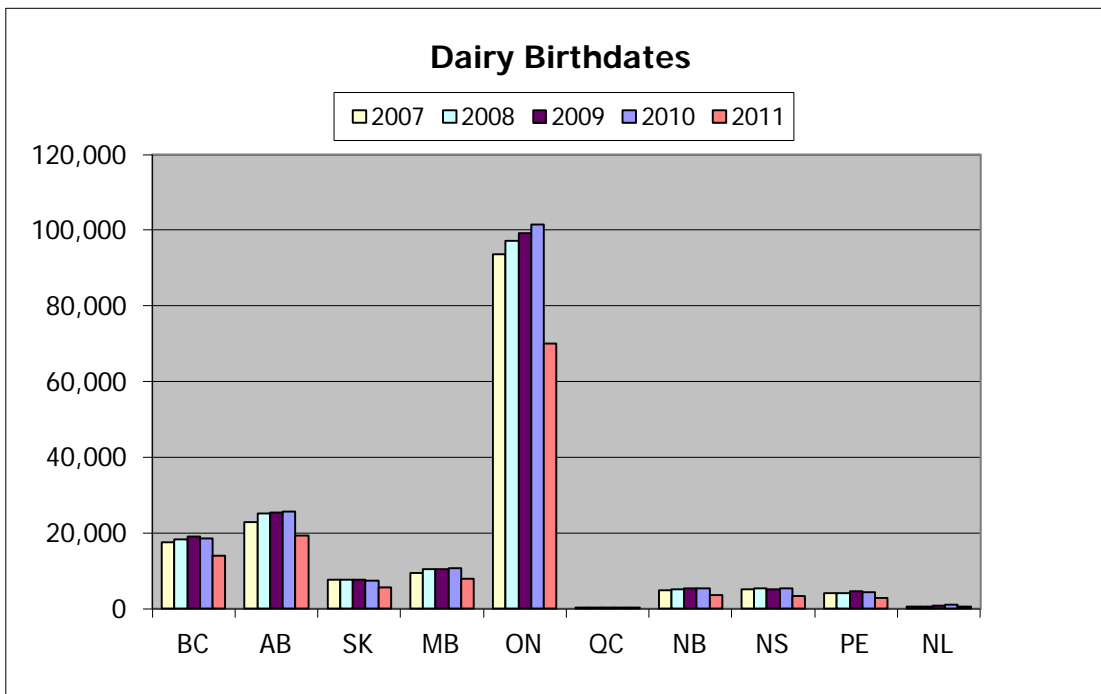
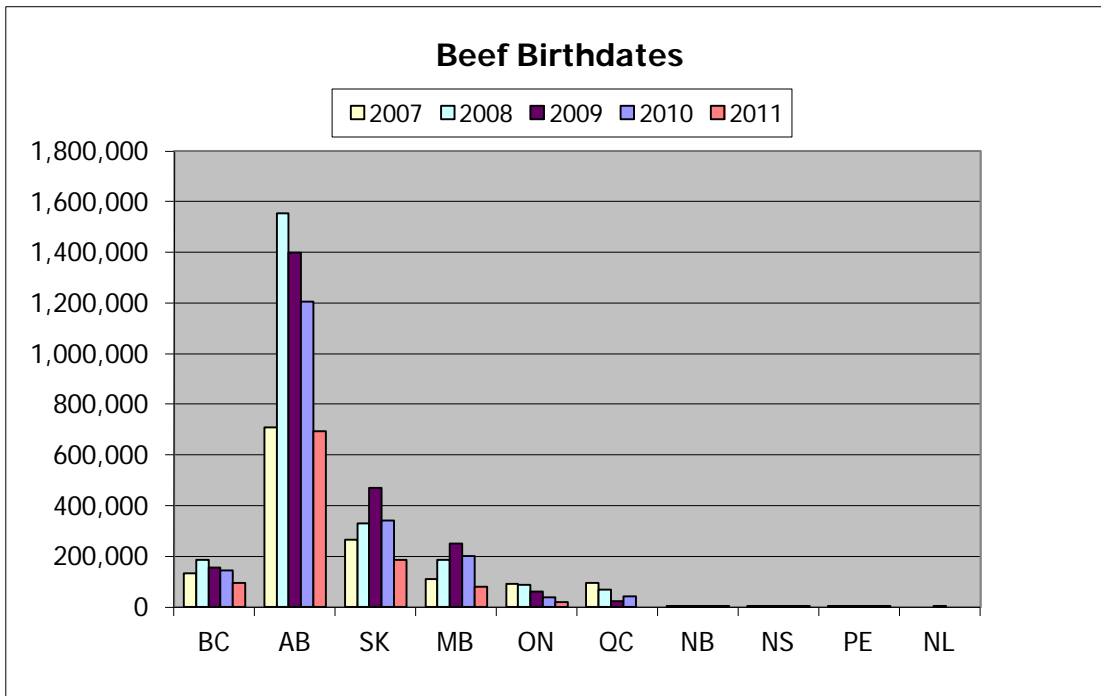
Region	Stats Canada # of 2011 calves as of July 1, 2011	CLTS # of 2011 calves AV'd as of Nov 30, 2011	% of herd Age Verified
BC	228,700	109,372	47.82%
AB	1,868,600	714,074	38.21%
SK	1,176,400	192,423	16.36%
MB	490,800	88,139	17.96%
ON	499,700	87,887	17.59%
NB	22,000	3,892	17.69%
NS	24,000	3,504	14.60%
PE	17,700	2,784	15.73%
NL	2,400	491	20.46%
Canada	4,330,300	1,202,566	27.77%



This information is provided for reference purposes only and was accurate at the time of publication. The Canadian Cattle Identification Agency (CCIA) is not responsible for any reliance on this information. Any distribution, duplication or disclosure of this information is strictly prohibited unless expressly authorized by the CCIA.



This information is provided for reference purposes only and was accurate at the time of publication. The Canadian Cattle Identification Agency (CCIA) is not responsible for any reliance on this information. Any distribution, duplication or disclosure of this information is strictly prohibited unless expressly authorized by the CCIA.



This information is provided for reference purposes only and was accurate at the time of publication. The Canadian Cattle Identification Agency (CCIA) is not responsible for any reliance on this information. Any distribution, duplication or disclosure of this information is strictly prohibited unless expressly authorized by the CCIA.

2010/2011 Birth Date Comparison

Beef Stats as of Nov 30, 2010				
	2007	2008	2009	2010
BC	130,973	184,983	151,993	118,666
AB	706,649	1,553,215	1,381,687	786,442
SK	267,017	328,921	469,171	236,076
MB	106,467	183,441	245,023	100,543
ON	90,209	87,391	58,142	20,184
QC	24,612	3,772	801	8
NB	455	498	694	608
NS	311	350	210	179
PE	846	576	662	205
NL	0	0	1	0

Beef Stats as of Nov 30, 2011					
	2007	2008	2009	2010	2011
BC	130,785	184,226	153,806	142,724	95,330
AB	708,679	1,552,878	1,399,894	1,206,429	694,829
SK	266,436	329,848	471,269	342,935	186,808
MB	109,227	185,498	250,494	199,714	80,383
ON	90,584	87,552	59,583	39,072	17,973
QC	94,466	68,184	21,363	39,870	0
NB	456	506	776	730	216
NS	311	353	248	357	88
PE	846	584	716	575	94
NL	0	0	1	0	0

Dairy Stats as of Nov 30, 2010				
	2007	2008	2009	2010
BC	17,382	18,237	18,953	13,678
AB	22,819	25,116	25,173	19,619
SK	6,929	6,838	6,797	4,868
MB	9,403	10,094	10,191	7,696
ON	93,319	96,498	97,306	70,205
QC	15	11	7	2
NB	4,727	4,978	5,243	3,502
NS	5,139	5,210	4,928	3,447
PE	3,955	4,082	4,333	2,809
NL	436	328	376	262

Dairy Stats as of Nov 30, 2011					
	2007	2008	2009	2010	2011
BC	17,382	18,249	19,142	18,562	14,042
AB	22,880	25,195	25,339	25,522	19,245
SK	7,524	7,609	7,531	7,387	5,615
MB	9,476	10,390	10,490	10,663	7,756
ON	93,630	97,185	99,182	101,394	69,914
QC	39	32	34	25	15
NB	4,740	5,012	5,380	5,203	3,676
NS	5,155	5,224	4,971	5,228	3,416
PE	3,969	4,125	4,464	4,408	2,690
NL	545	603	773	1,126	491