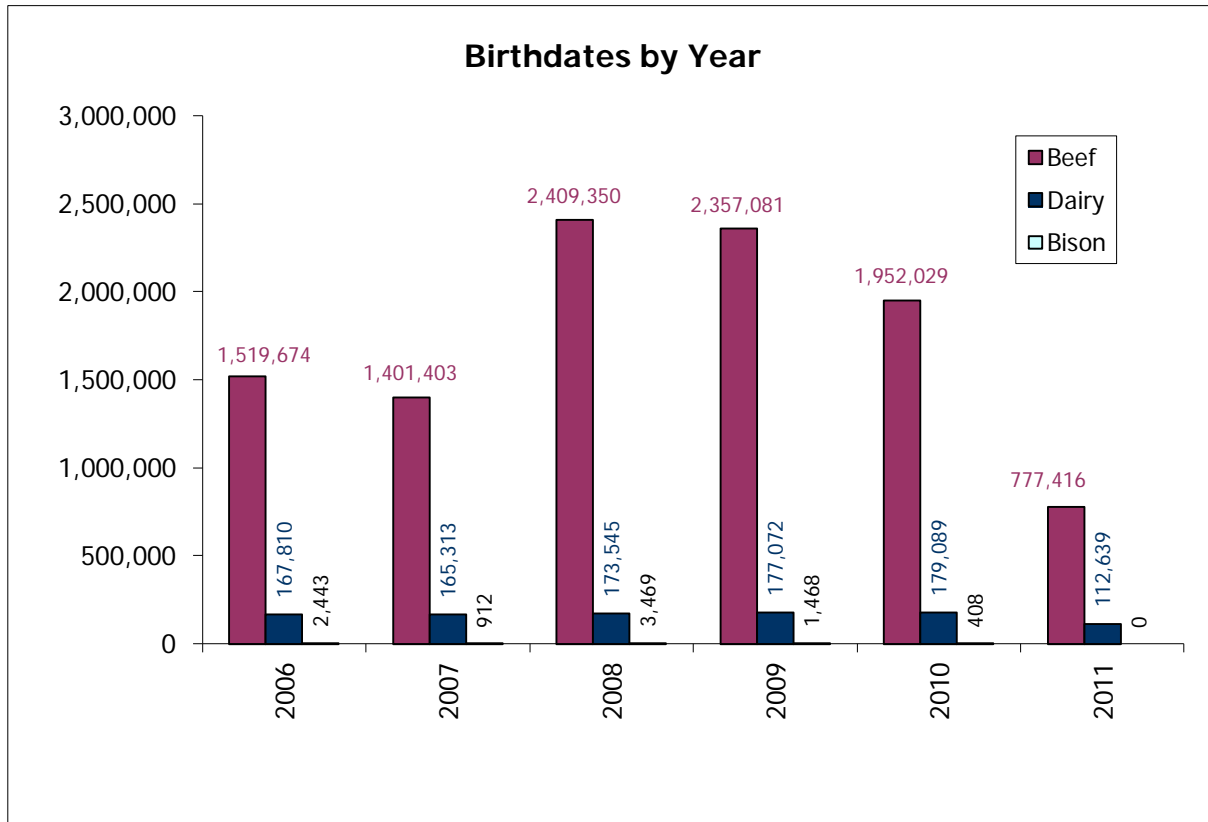
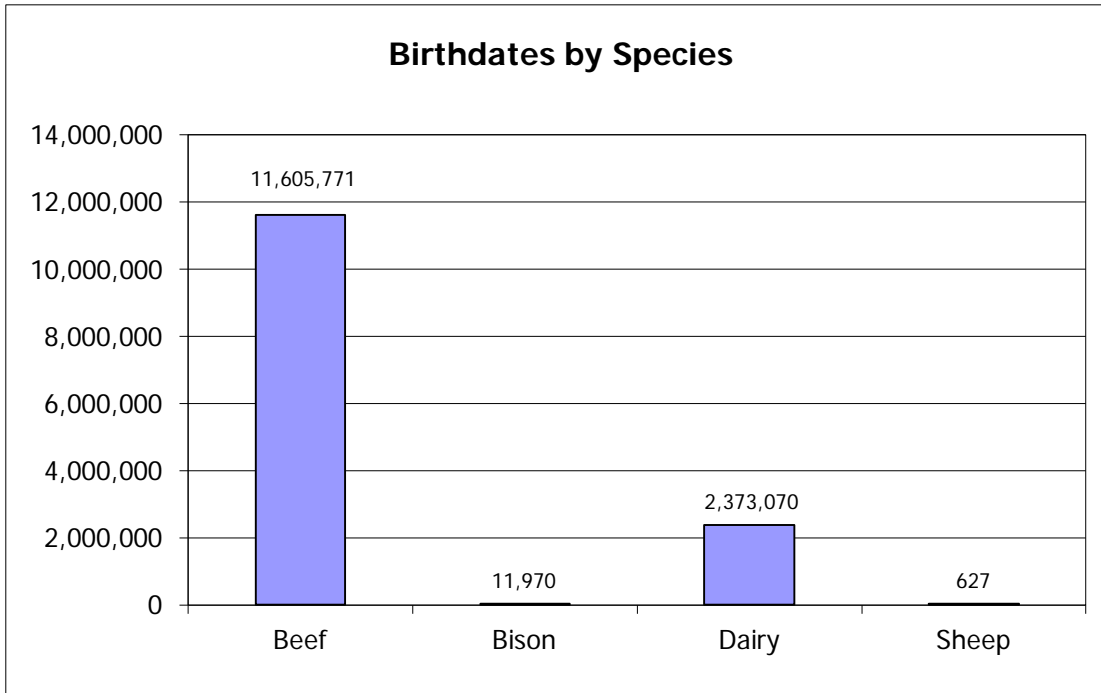


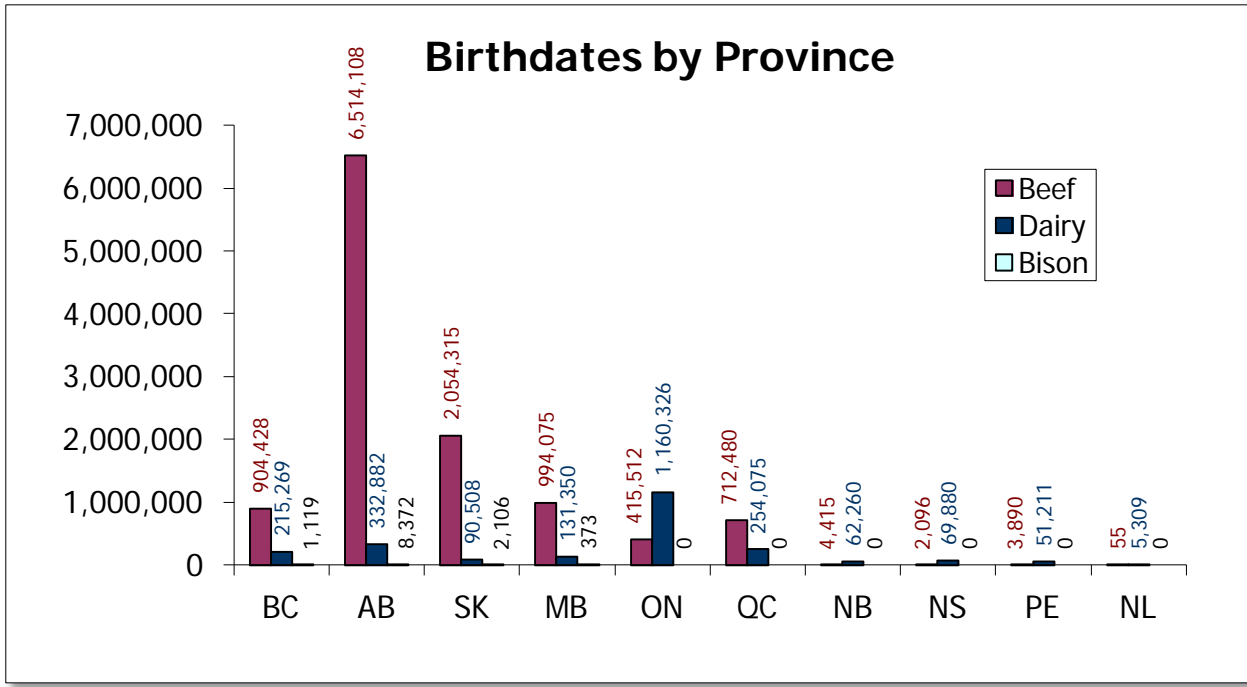
CLTS Statistics- As of October 31, 2011

Birthdates in Database 13,991,438



This information is provided for reference purposes only and was accurate at the time of publication. The Canadian Cattle Identification Agency (CCIA) is not responsible for any reliance on this information. Any distribution, duplication or disclosure of this information is strictly prohibited unless expressly authorized by the CCIA.

CLTS Statistics- As of October 31, 2011



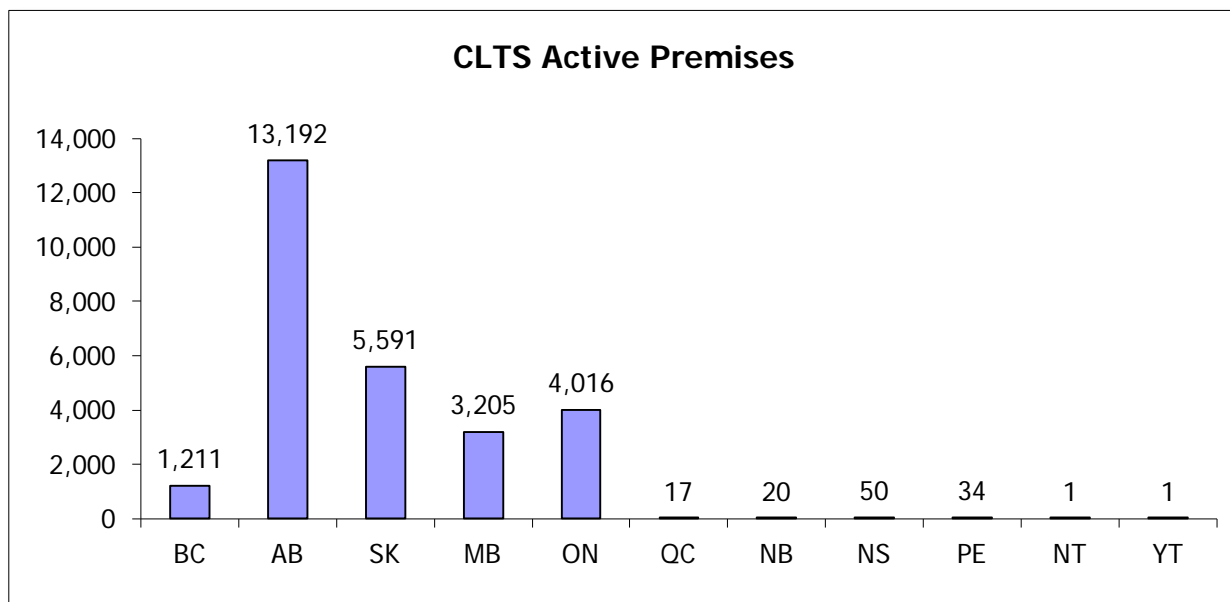
	# of producers age verifying											
	BC				AB				SK			
	2008	2009	2010	2011	2008	2009	2010	2011	2008	2009	2010	2011
Bison	1	0	0	0	31	12	14	6	10	5	3	2
Beef	1795	1920	1780	1407	13934	14097	13812	9115	2357	3689	3430	1850
Dairy	401	391	381	356	462	498	475	444	158	151	130	127

	MB				ON				NB			
	2008	2009	2010	2011	2008	2009	2010	2011	2008	2009	2010	2011
Bison	1	1	1	1	0	0	0	0	0	0	0	0
Beef	1753	3101	3317	2455	1891	1724	1117	929	19	35	33	15
Dairy	272	260	257	234	3564	3461	3385	3325	182	174	171	167

	NS				PE				NL			
	2008	2009	2010	2011	2008	2009	2010	2011	2008	2009	2010	2011
Bison	0	0	0	0	0	0	0	0	0	0	0	0
Beef	10	18	19	17	14	9	18	17	0	1	0	0
Dairy	184	179	174	162	174	160	159	155	6	9	11	13

This information is provided for reference purposes only and was accurate at the time of publication. The Canadian Cattle Identification Agency (CCIA) is not responsible for any reliance on this information. Any distribution, duplication or disclosure of this information is strictly prohibited unless expressly authorized by the CCIA.

CLTS Statistics- As of October 31, 2011



Number of Active Premises Registered in the CLTS- Monthly											
Month	BC	AB	SK	MB	ON	QC	NB	NS	PE	NT	YT
As of Dec 31, 2010	1,181	13,086	5,398	3,040	3,746	9	18	48	32	1	1
Jan	4	6	27	51	58	1	0	0	0	0	0
Feb	1	10	11	20	24	0	0	0	1	0	0
Mar	10	11	24	25	60	1	1	0	0	1	0
Apr	0	10	21	24	49	2	0	1	0	0	0
May	0	10	17	30	60	5	0	1	0	0	0
Jun	0	14	12	9	11	0	0	0	0	0	0
Jul	5	7	4	0	4	0	1	0	0	0	0
Aug	3	10	15	1	3	1	0	0	0	0	0
Sept	2	11	27	2	0	2	0	0	0	0	0
Oct	11	17	35	3	1	0	0	0	2	0	0

This information is provided for reference purposes only and was accurate at the time of publication. The Canadian Cattle Identification Agency (CCIA) is not responsible for any reliance on this information. Any distribution, duplication or disclosure of this information is strictly prohibited unless expressly authorized by the CCIA.

CLTS Statistics- As of October 31, 2011

The charts below include both dairy and beef calves.

Region	Stats Canada # of 2008 calves as of July 1, 2008	CLTS- # of 2008 calves AV'd as of Oct 31, 2011	% of herd Age Verified
BC	270,000	202,472	74.99%
AB	2,002,000	1,578,007	78.82%
SK	1,346,000	337,360	25.06%
MB	575,000	195,492	34.00%
ON	498,500	184,705	37.05%
NB	23,900	5,518	23.09%
NS	28,300	5,577	19.71%
PE	19,300	4,708	24.39%
NL	2,600	603	23.19%
Canada	4,765,600	2,514,442	52.76%

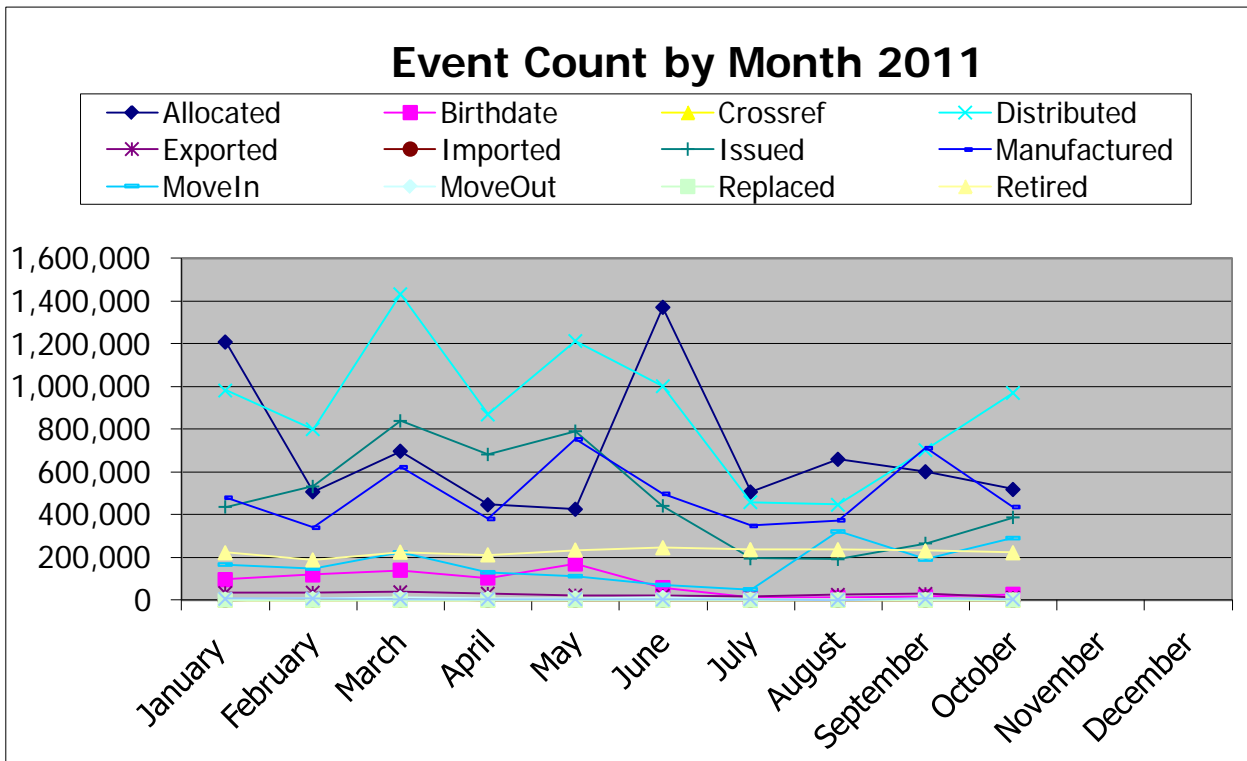
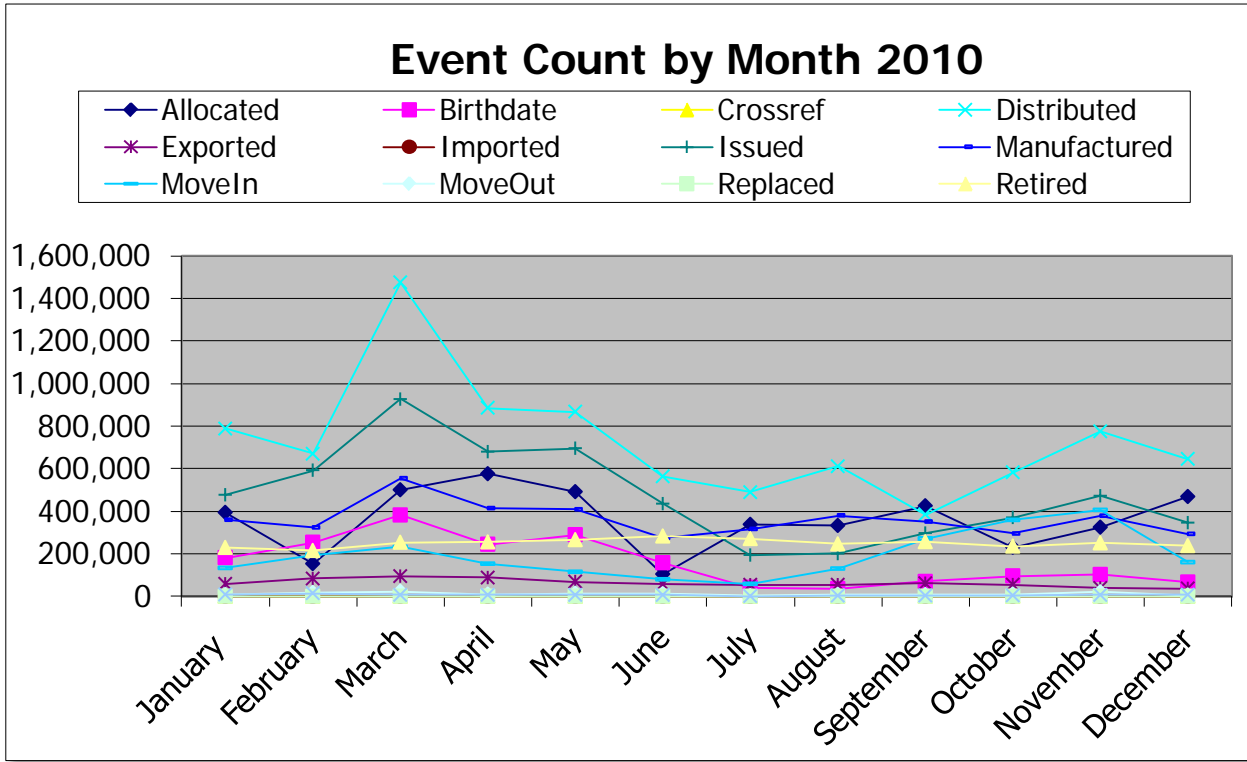
Region	Stats Canada- # of 2009 calves as of July 1, 2009	CLTS # of 2009 calves AV'd as of Oct 31, 2011	% of herd Age Verified
BC	246,000	172,915	70.29%
AB	1,935,000	1,425,129	73.65%
SK	1,257,000	478,729	38.09%
MB	527,000	260,625	49.45%
ON	460,300	158,661	34.47%
NB	22,000	6,150	27.95%
NS	22,000	5,218	23.72%
PE	18,000	5,177	28.76%
NL	2,600	773	29.73%
Canada	4,489,900	2,513,377	55.98%

Region	Stats Canada- # of 2010 calves as of July 1, 2010	CLTS # of 2010 calves AV'd as of Oct 31, 2011	% of herd Age Verified
BC	229,200	160,970	70.23%
AB	1,855,000	1,227,799	66.19%
SK	1,181,000	349,216	29.57%
MB	486,000	208,303	42.86%
ON	458,900	139,366	30.37%
NB	23,000	5,918	25.73%
NS	20,000	5,557	27.79%
PE	16,000	4,964	31.03%
NL	2,400	1,057	44.04%
Canada	4,271,500	2,103,150	49.24%

Region	Stats Canada- # of 2011 calves as of July 1, 2011	CLTS # of 2011 calves AV'd as of Oct 31, 2011	% of herd Age Verified
BC	228,700	92,435	40.42%
AB	1,868,600	510,758	27.33%
SK	1,176,400	141,937	12.07%
MB	490,800	60,002	12.23%
ON	499,700	75,699	15.15%
NB	22,000	3,405	15.48%
NS	24,000	2,974	12.39%
PE	17,700	2,480	14.01%
NL	2,400	333	13.88%
Canada	4,330,300	890,023	20.55%

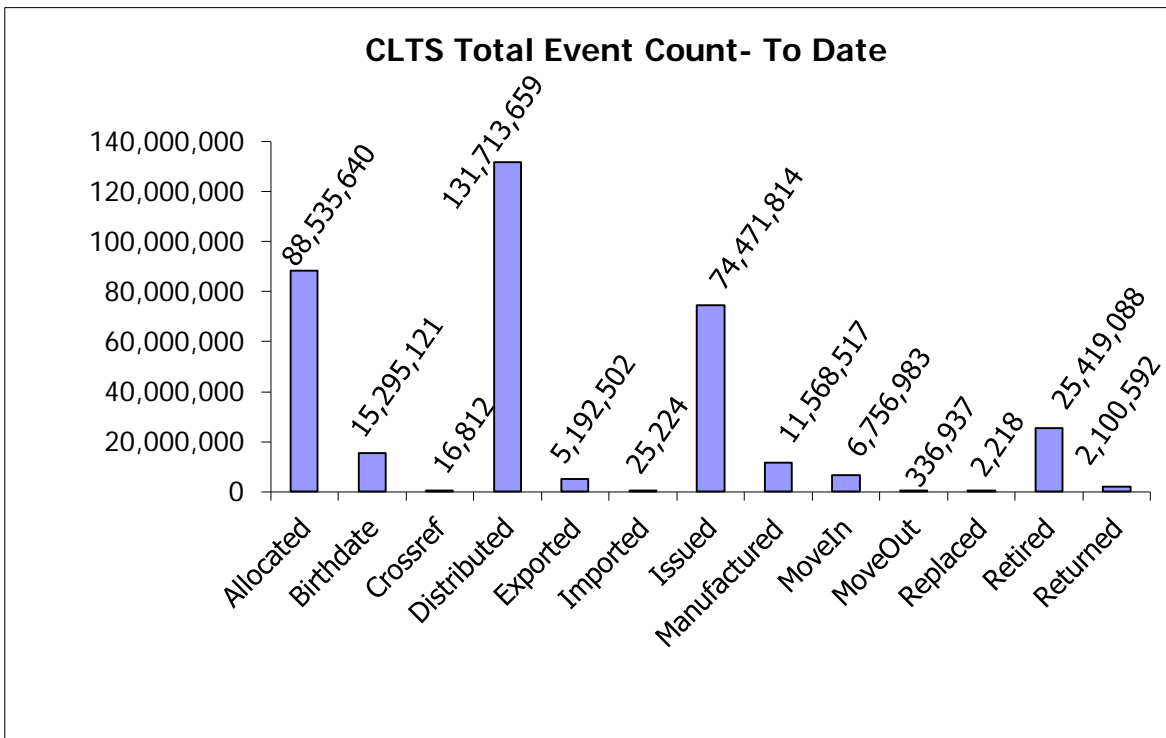
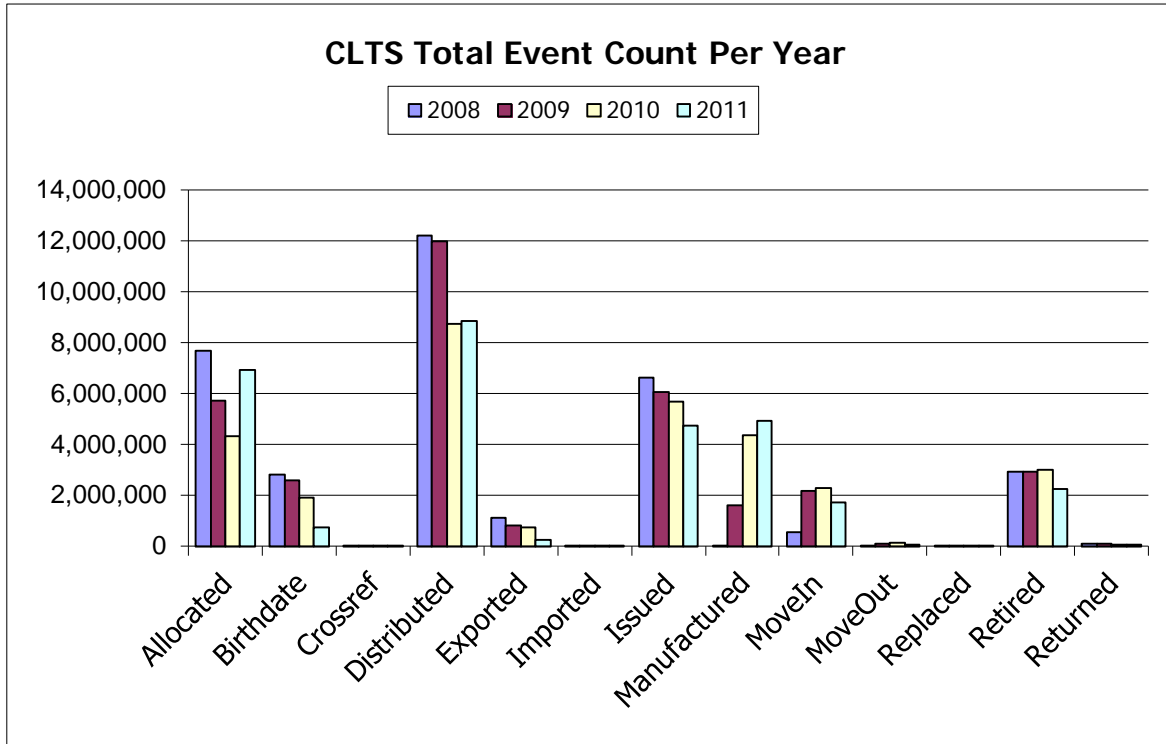
This information is provided for reference purposes only and was accurate at the time of publication. The Canadian Cattle Identification Agency (CCIA) is not responsible for any reliance on this information. Any distribution, duplication or disclosure of this information is strictly prohibited unless expressly authorized by the CCIA.

CLTS Statistics- As of October 31, 2011



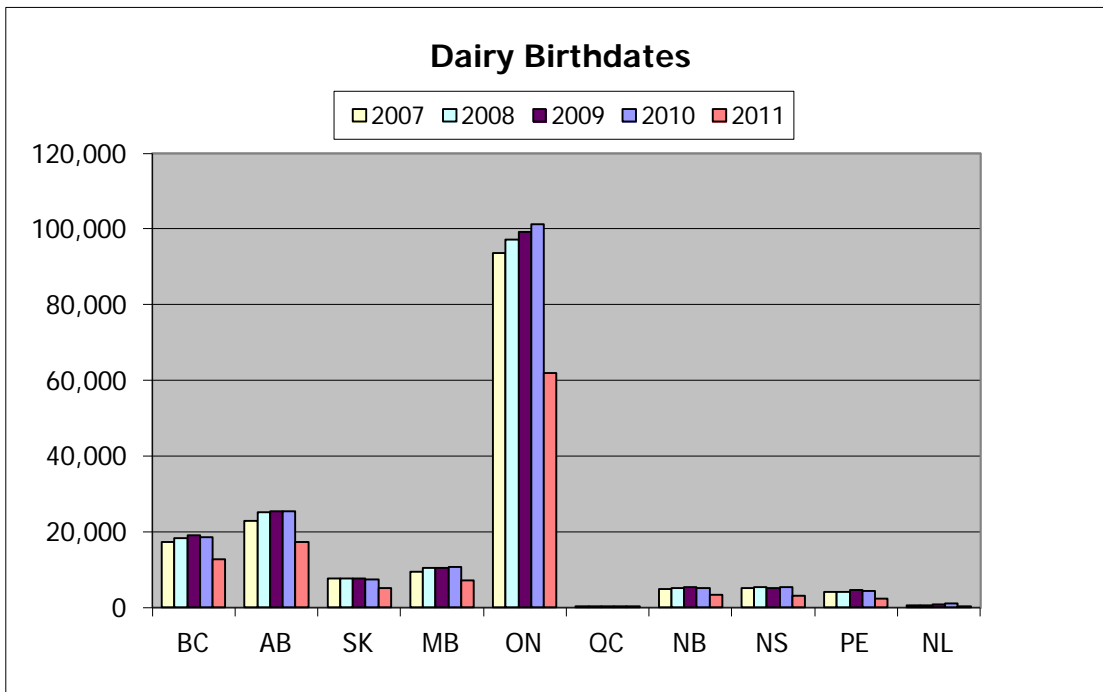
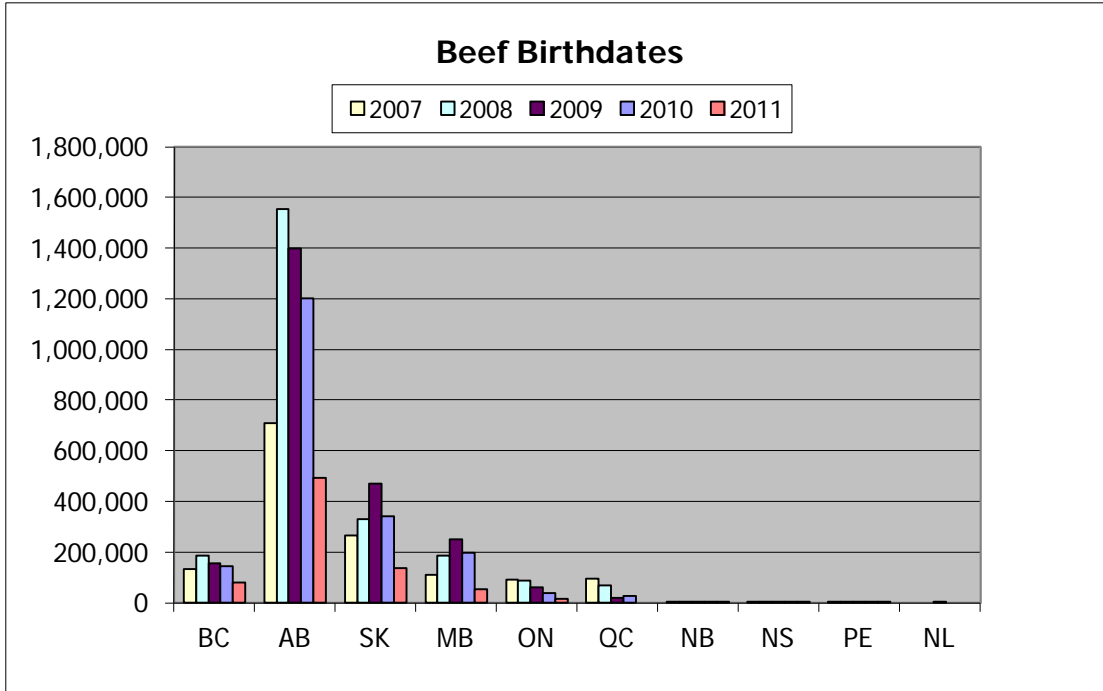
This information is provided for reference purposes only and was accurate at the time of publication. The Canadian Cattle Identification Agency (CCIA) is not responsible for any reliance on this information. Any distribution, duplication or disclosure of this information is strictly prohibited unless expressly authorized by the CCIA.

CLTS Statistics- As of October 31, 2011



This information is provided for reference purposes only and was accurate at the time of publication. The Canadian Cattle Identification Agency (CCIA) is not responsible for any reliance on this information. Any distribution, duplication or disclosure of this information is strictly prohibited unless expressly authorized by the CCIA.

CLTS Statistics- As of October 31, 2011



This information is provided for reference purposes only and was accurate at the time of publication. The Canadian Cattle Identification Agency (CCIA) is not responsible for any reliance on this information. Any distribution, duplication or disclosure of this information is strictly prohibited unless expressly authorized by the CCIA.

CLTS Statistics- As of October 31, 2011

2010/2011 Birth Date Comparison

Beef Stats as of Oct 31, 2010				
	2007	2008	2009	2010
BC	130,867	184,886	151,505	97,958
AB	706,901	1,553,968	1,377,581	576,206
SK	266,885	328,491	468,447	165,014
MB	106,048	183,112	241,901	61,580
ON	90,212	87,379	57,697	15,729
QC	24,610	3,771	799	1
NB	455	498	653	369
NS	311	350	210	70
PE	842	506	581	205
NL	0	0	1	0

Beef Stats as of Oct 31, 2011					
	2007	2008	2009	2010	2011
BC	130,780	184,223	153,780	142,421	79,838
AB	708,673	1,552,836	1,399,839	1,202,370	493,412
SK	266,414	329,753	471,215	341,832	136,938
MB	108,903	185,124	250,222	197,643	53,012
ON	90,581	87,550	59,550	38,177	13,872
QC	94,439	68,097	20,742	27,887	0
NB	456	506	770	730	216
NS	311	353	247	350	32
PE	846	584	715	563	79
NL	0	0	1	0	0

Dairy Stats as of Oct 31, 2010				
	2007	2008	2009	2010
BC	17,348	18,190	18,890	9,957
AB	22,814	25,100	25,132	14,767
SK	6,922	6,820	6,788	3,708
MB	9,367	10,029	10,124	5,393
ON	93,237	96,249	96,759	50,887
QC	15	11	2	1
NB	4,727	4,971	5,238	2,635
NS	5,129	5,190	4,907	2,603
PE	3,948	4,055	4,290	1,939
NL	385	284	314	134

Dairy Stats as of Oct 31, 2011					
	2007	2008	2009	2010	2011
BC	17,380	18,249	19,135	18,549	12,597
AB	22,866	25,171	25,290	25,429	17,346
SK	7,524	7,607	7,514	7,384	4,999
MB	9,470	10,368	10,403	10,660	6,990
ON	93,625	97,155	99,111	101,189	61,827
QC	39	32	34	25	15
NB	4,740	5,012	5,380	5,188	3,189
NS	5,155	5,224	4,971	5,207	2,942
PE	3,969	4,124	4,462	4,401	2,401
NL	545	603	772	1,057	333

This information is provided for reference purposes only and was accurate at the time of publication. The Canadian Cattle Identification Agency (CCIA) is not responsible for any reliance on this information. Any distribution, duplication or disclosure of this information is strictly prohibited unless expressly authorized by the CCIA.