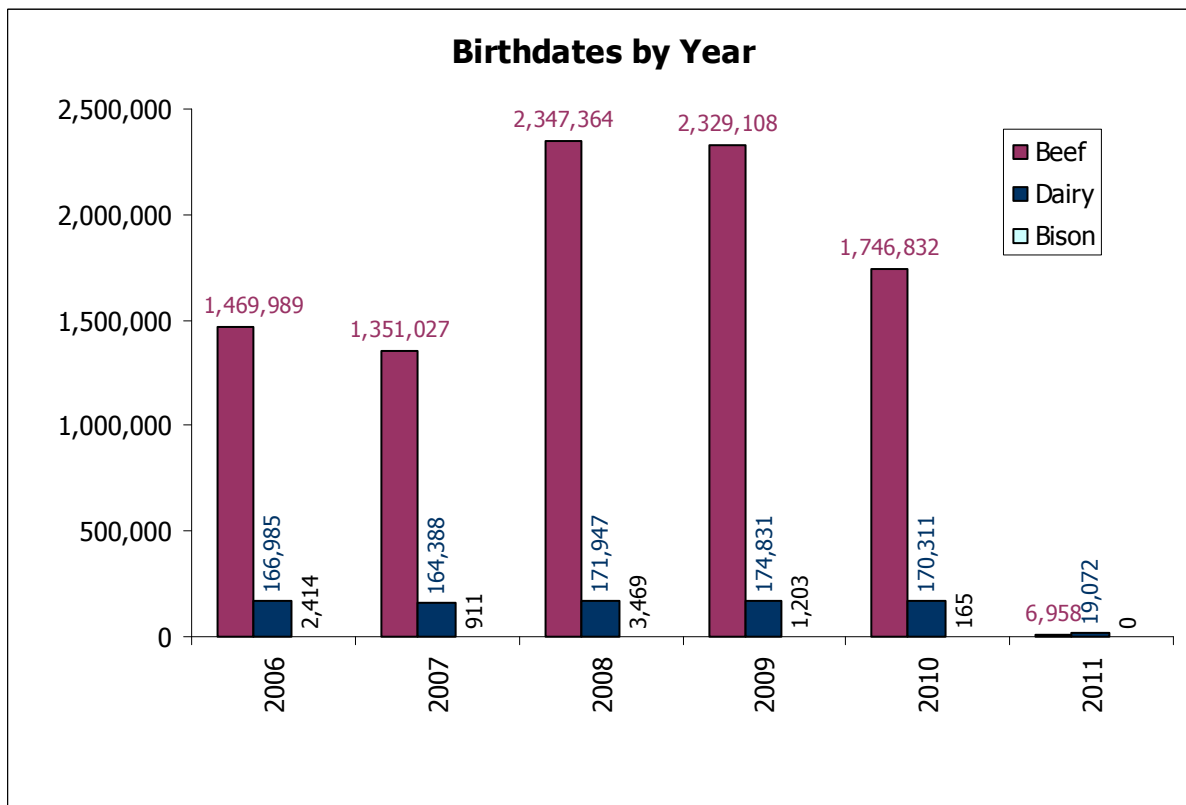


CLTS Statistics- As of March 31, 2011

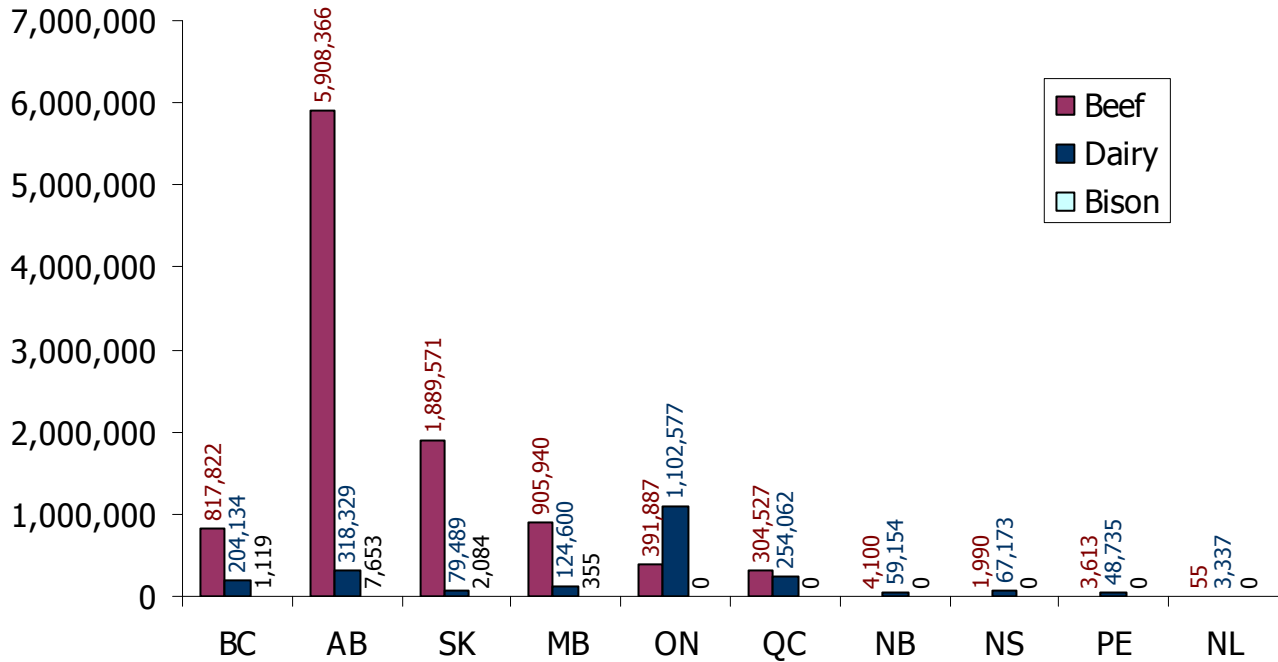
Birthdates in Database 12, 501, 611



This information is provided for reference purposes only and was accurate at the time of publication. The Canadian Cattle Identification Agency (CCIA) is not responsible for any reliance on this information. Any distribution, duplication or disclosure of this information is strictly prohibited unless expressly authorized by the CCIA.

CLTS Statistics- As of March 31, 2011

Birthdates by Province



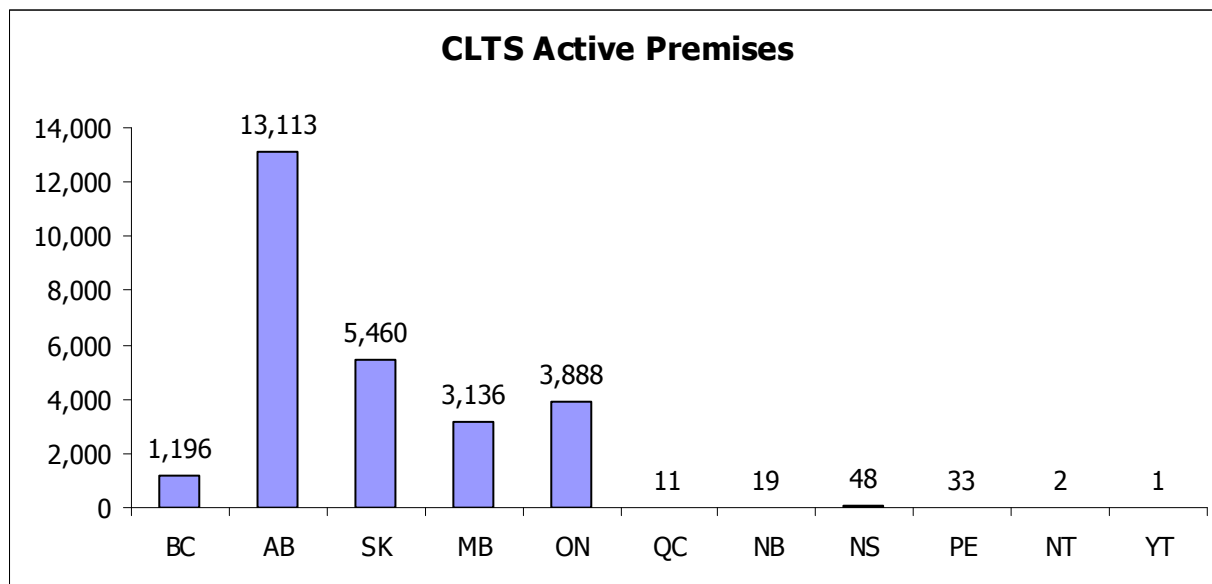
# of producers age verifying												
	BC				AB				SK			
	2008	2009	2010	2011	2008	2009	2010	2011	2008	2009	2010	2011
Bison	1	0	0	0	31	12	14	4	10	5	3	1
Beef	1795	1920	1780	461	13934	14097	13812	2873	2357	3689	3430	668
Dairy	401	391	381	325	462	498	475	418	158	151	130	111

	MB				ON				NB			
	2008	2009	2010	2011	2008	2009	2010	2011	2008	2009	2010	2011
Bison	1	1	1	1	0	0	0	0	0	0	0	0
Beef	1753	3101	3317	1590	1891	1724	1117	299	19	35	33	6
Dairy	272	260	257	210	3564	3461	3385	2931	182	174	171	142

	NS				PE				NL			
	2008	2009	2010	2011	2008	2009	2010	2011	2008	2009	2010	2011
Bison	0	0	0	0	0	0	0	0	0	0	0	0
Beef	10	18	19	7	14	9	18	7	0	1	0	0
Dairy	184	179	174	146	174	160	159	134	6	9	11	6

This information is provided for reference purposes only and was accurate at the time of publication. The Canadian Cattle Identification Agency (CCIA) is not responsible for any reliance on this information. Any distribution, duplication or disclosure of this information is strictly prohibited unless expressly authorized by the CCIA.

CLTS Statistics- As of March 31, 2011



Number of Active Premises Registered in the CLTS- Monthly											
Month	BC	AB	SK	MB	ON	QC	NB	NS	PE	NT	YT
As of Dec 31, 2010	1,181	13,086	5,398	3,040	3,746	9	18	48	32	1	1
Jan	4	6	27	51	58	1	0	0	0	0	0
Feb	1	10	11	20	24	0	0	0	1	0	0
Mar	10	11	24	25	60	1	1	0	0	1	0

This information is provided for reference purposes only and was accurate at the time of publication. The Canadian Cattle Identification Agency (CCIA) is not responsible for any reliance on this information. Any distribution, duplication or disclosure of this information is strictly prohibited unless expressly authorized by the CCIA.

CLTS Statistics- As of March 31, 2011

The charts below include both dairy and beef calves.

Region	Stats Canada # of 2008 calves as of July 1, 2008	CLTS- # of 2008 calves AV'd as of Mar 31, 2011	% of herd Age Verified
BC	270,000	202,502	75.00%
AB	2,002,000	1,577,990	78.82%
SK	1,346,000	336,621	25.01%
MB	575,000	194,363	33.80%
ON	498,500	184,324	36.98%
NB	23,900	5,493	22.98%
NS	28,300	5,569	19.68%
PE	19,300	4,669	24.19%
NL	2,600	346	13.31%
Canada	4,765,600	2,511,877	52.71%

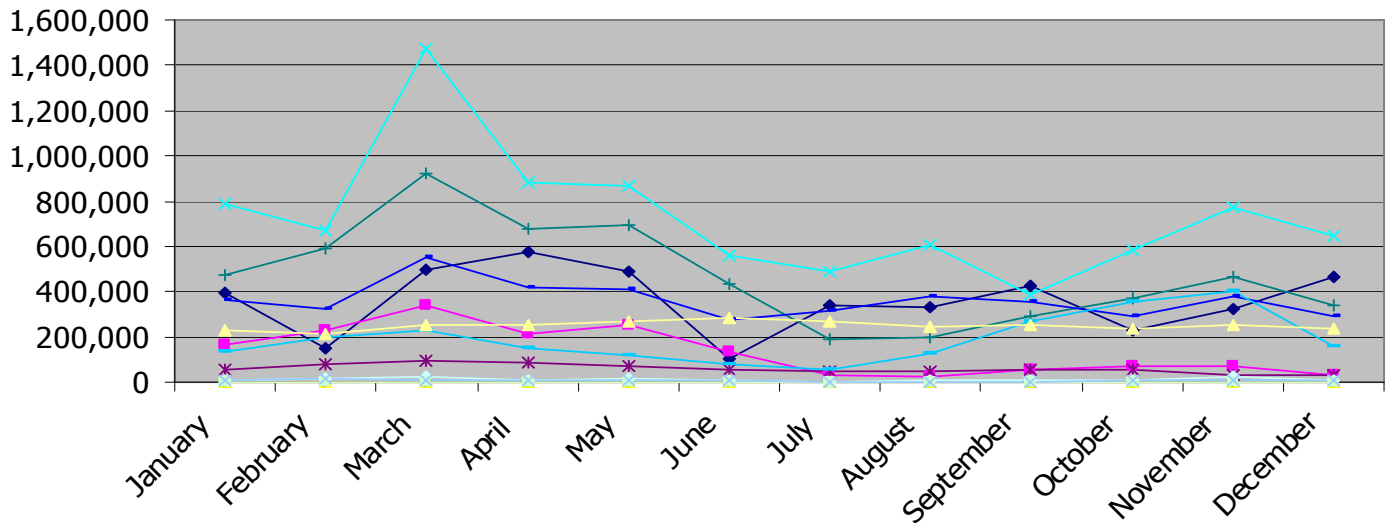
Region	Stats Canada- # of 2009 calves as of July 1, 2009	CLTS # of 2009 calves AV'd as of Mar 31, 2011	% of herd Age Verified
BC	246,000	172,093	69.96%
AB	1,935,000	1,420,620	73.42%
SK	1,257,000	477,925	38.02%
MB	527,000	258,640	49.08%
ON	460,300	157,124	34.14%
NB	22,000	6,067	27.58%
NS	22,000	5,184	23.56%
PE	18,000	5,073	28.18%
NL	2,600	378	14.54%
Canada	4,489,900	2,503,104	55.75%

Region	Stats Canada- # of 2010 calves as of July 1, 2010	CLTS # of 2010 calves AV'd as of Mar 31, 2011	% of herd Age Verified
BC	229,200	153,621	67.02%
AB	1,855,000	1,120,475	60.40%
SK	1,181,000	318,933	27.01%
MB	486,000	181,974	37.44%
ON	458,900	126,533	27.57%
NB	23,000	5,439	23.65%
NS	20,000	5,230	26.15%
PE	16,000	4,536	28.35%
NL	2,400	313	13.04%
Canada	4,271,500	1,917,054	44.88%

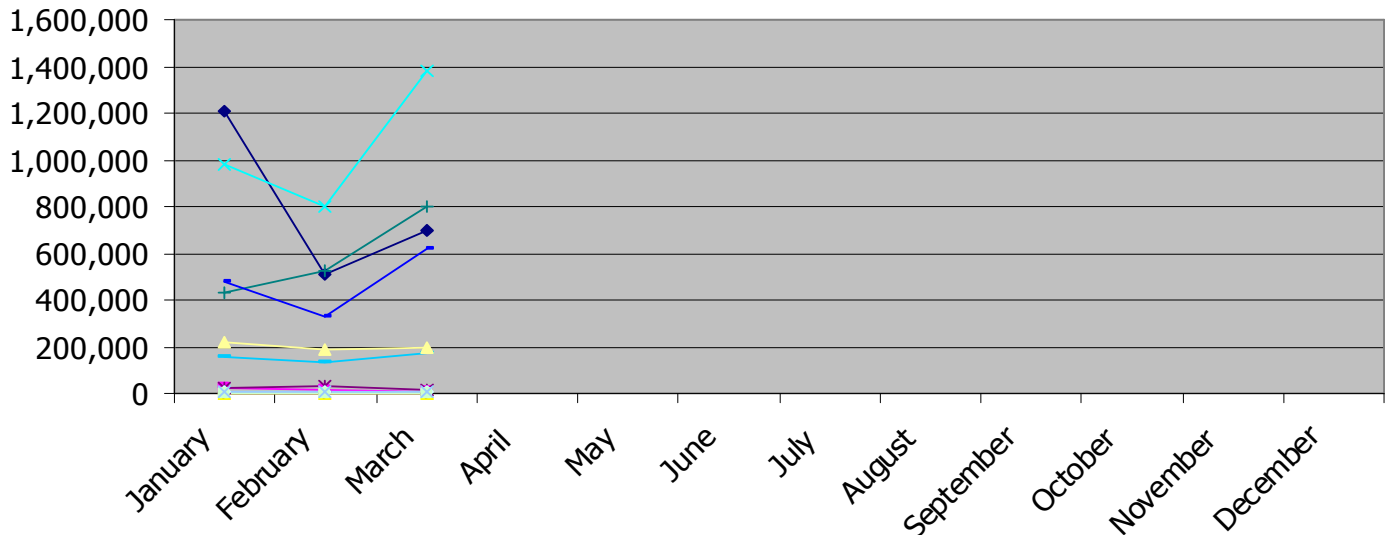
This information is provided for reference purposes only and was accurate at the time of publication. The Canadian Cattle Identification Agency (CCIA) is not responsible for any reliance on this information. Any distribution, duplication or disclosure of this information is strictly prohibited unless expressly authorized by the CCIA.

CLTS Statistics- As of March 31, 2011

Event Count by Month 2010

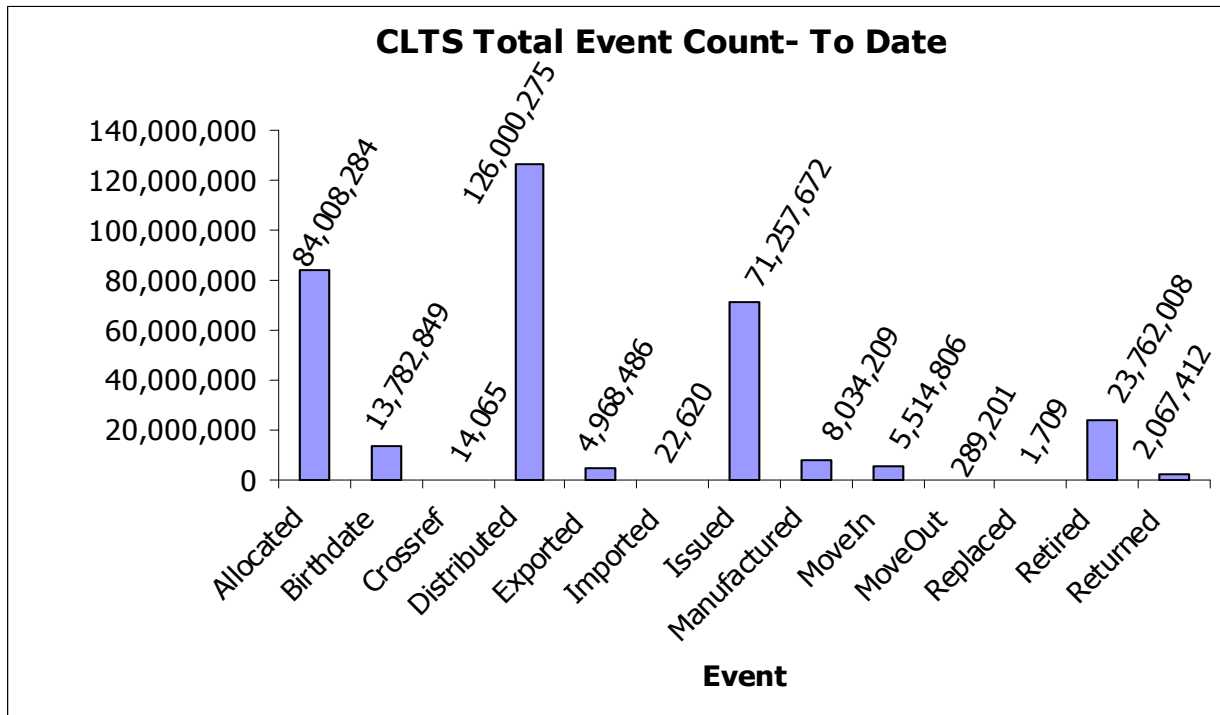
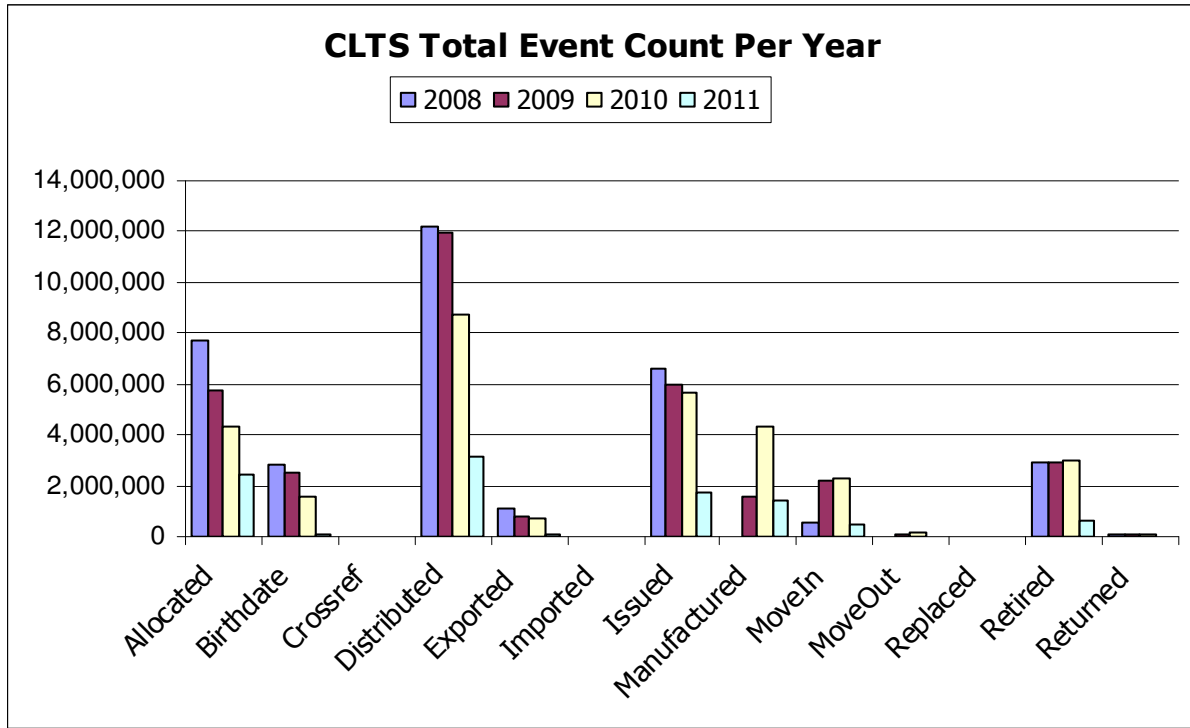


Event Count by Month 2011



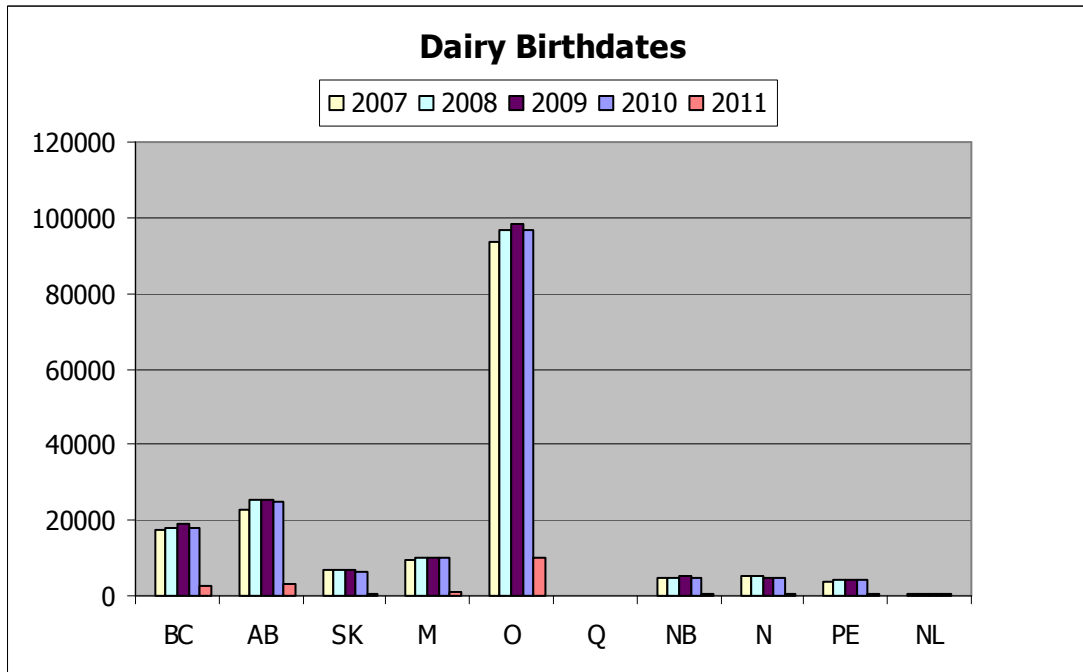
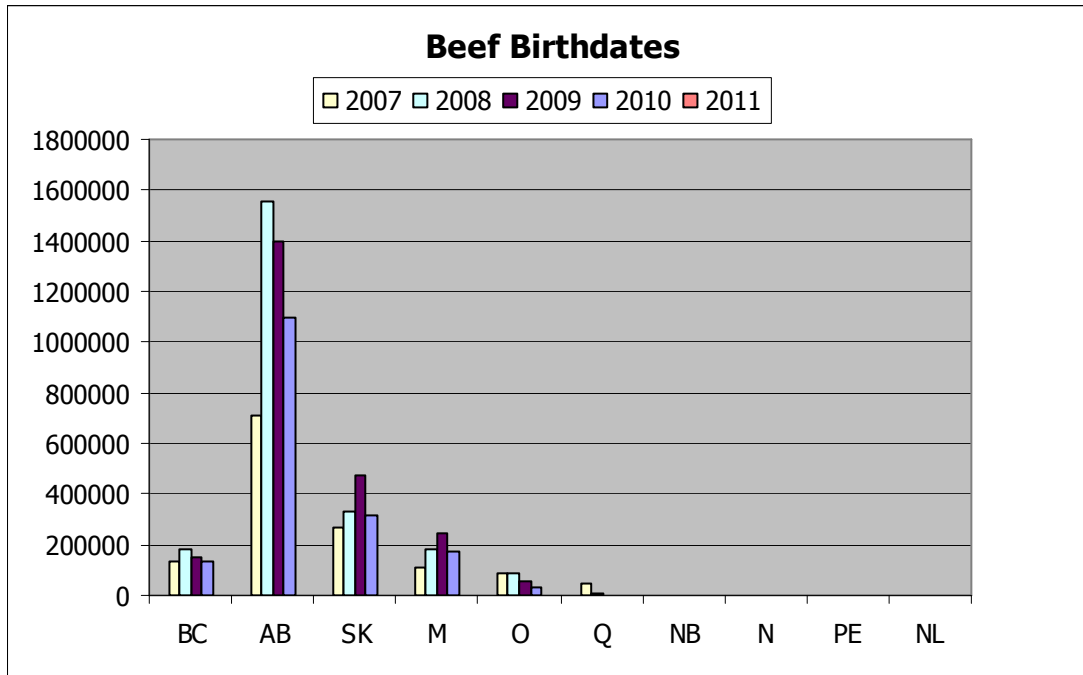
This information is provided for reference purposes only and was accurate at the time of publication. The Canadian Cattle Identification Agency (CCIA) is not responsible for any reliance on this information. Any distribution, duplication or disclosure of this information is strictly prohibited unless expressly authorized by the CCIA.

CLTS Statistics- As of March 31, 2011



This information is provided for reference purposes only and was accurate at the time of publication. The Canadian Cattle Identification Agency (CCIA) is not responsible for any reliance on this information. Any distribution, duplication or disclosure of this information is strictly prohibited unless expressly authorized by the CCIA.

CLTS Statistics- As of March 31, 2011



This information is provided for reference purposes only and was accurate at the time of publication. The Canadian Cattle Identification Agency (CCIA) is not responsible for any reliance on this information. Any distribution, duplication or disclosure of this information is strictly prohibited unless expressly authorized by the CCIA.

CLTS Statistics- As of March 31, 2011

2010/2011 Birth Date Comparison

Beef Stats as of March 31, 2010				
	2007	2008	2009	2010
BC	130,753	184,796	139,536	1,544
AB	706,507	1,556,518	1,241,718	4,548
SK	266,732	327,224	421,030	1,305
MB	104,503	179,981	204,861	1,890
ON	90,318	86,469	49,336	197
QC	20,114	3,106	0	0
NB	455	496	591	1
NS	311	343	157	3
PE	842	457	282	0
NL	0	0	1	0

Beef Stats as of March 31, 2011					
	2007	2008	2009	2010	2011
BC	130,797	184,320	153,077	135,735	898
AB	707,272	1,552,832	1,395,368	1,095,605	3097
SK	267,313	329,702	471,002	312,573	856
MB	107,968	184,194	248,349	171,862	1905
ON	90,314	87,483	58,835	29,656	191
QC	45,752	7,078	801	8	0
NB	454	501	765	638	6
NS	311	351	226	296	5
PE	846	579	684	403	0
NL	0	0	1	0	0

Dairy Stats as of March 31, 2010				
	2007	2008	2009	2010
BC	17,165	17,907	17,539	1296
AB	22,749	25,026	24,764	1,946
SK	6,950	6,831	6,484	309
MB	9,256	9,868	9,605	576
ON	92,873	95,459	90,721	5456
QC	15	9	2	0
NB	4,727	4,916	4,891	385
NS	5,121	5,166	4,587	250
PE	3,939	4,033	3,924	189
NL	220	257	263	12

Dairy Stats as of March 31, 2011					
	2007	2008	2009	2010	2011
BC	17,333	18,182	19,016	17,886	2,392
AB	22,865	25,158	25,252	24,870	3,203
SK	6,983	6,919	6,923	6,360	632
MB	9,437	10,169	10,291	10,112	1,166
ON	93,445	96,841	98,289	96,877	10,213
QC	39	32	34	25	2
NB	4,736	4,992	5,302	4,801	576
NS	5,148	5,218	4,958	4,934	535
PE	3,957	4,090	4,389	4,133	338
NL	445	346	377	313	15

This information is provided for reference purposes only and was accurate at the time of publication. The Canadian Cattle Identification Agency (CCIA) is not responsible for any reliance on this information. Any distribution, duplication or disclosure of this information is strictly prohibited unless expressly authorized by the CCIA.