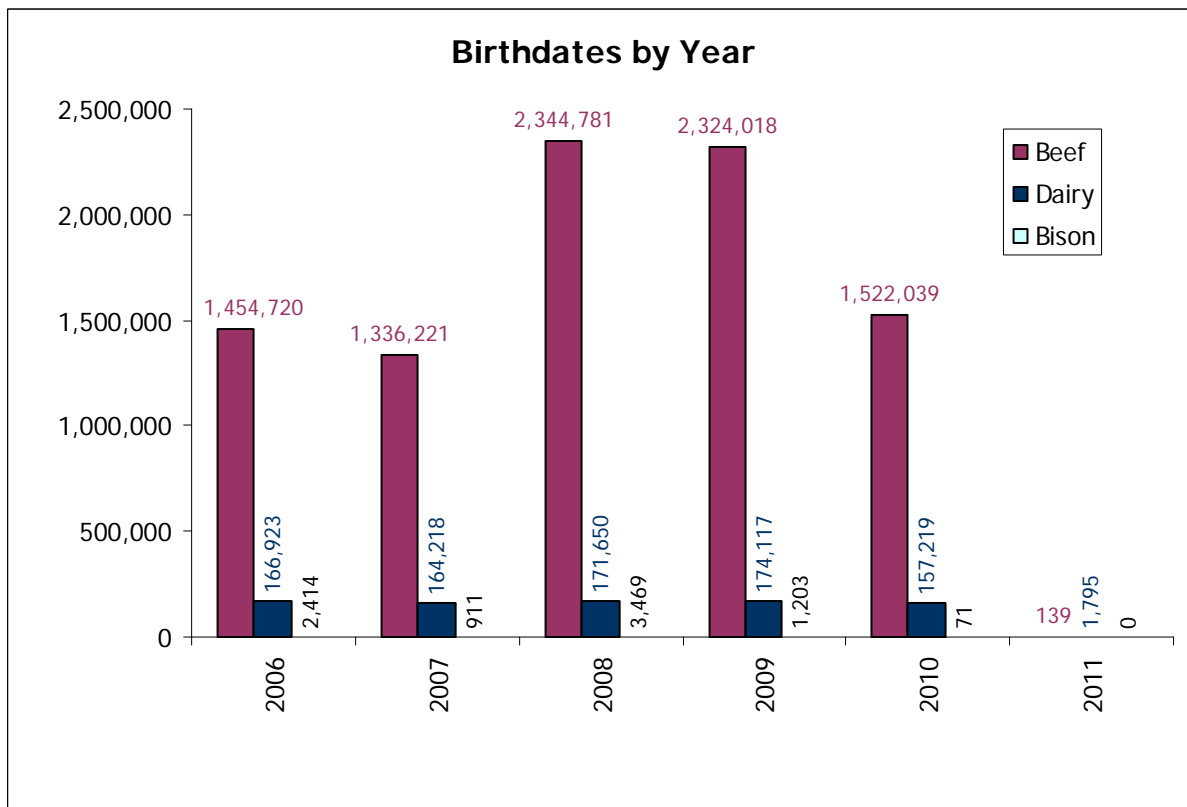


## CLTS Statistics- As of January 31, 2011

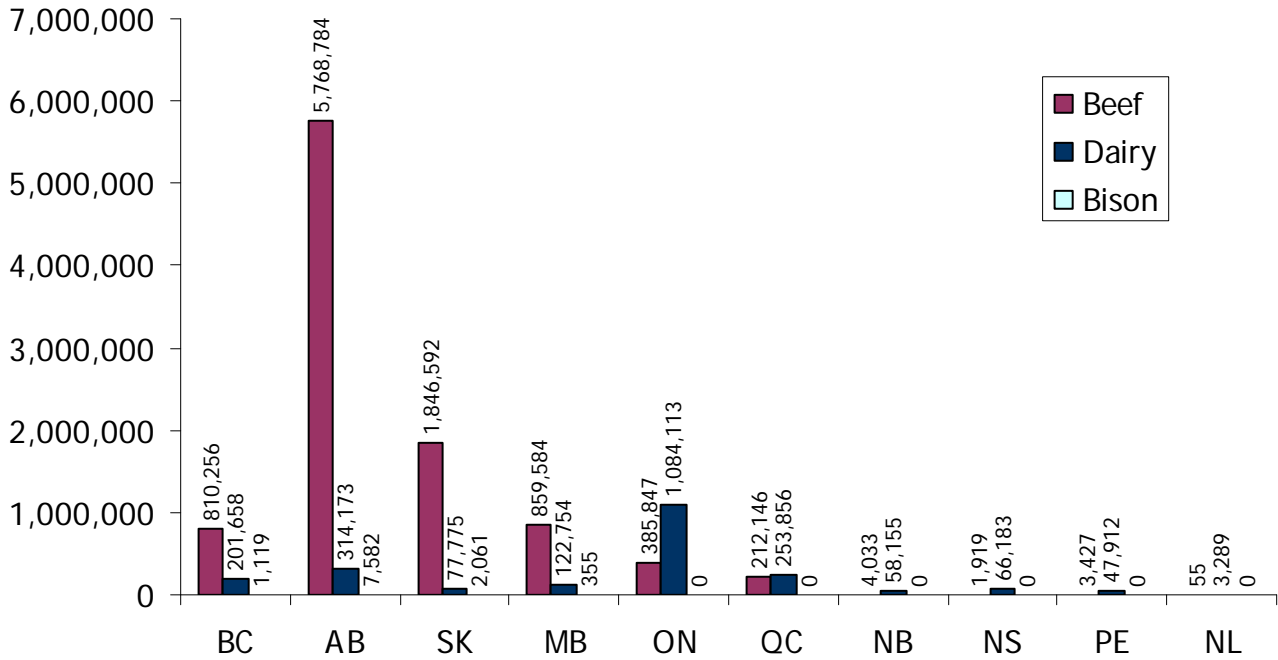
Birthdates in Database 12, 134, 567



This information is provided for reference purposes only and was accurate at the time of publication. The Canadian Cattle Identification Agency (CCIA) is not responsible for any reliance on this information. Any distribution, duplication or disclosure of this information is strictly prohibited unless expressly authorized by the CCIA.

## CLTS Statistics- As of January 31, 2011

### Birthdates by Province



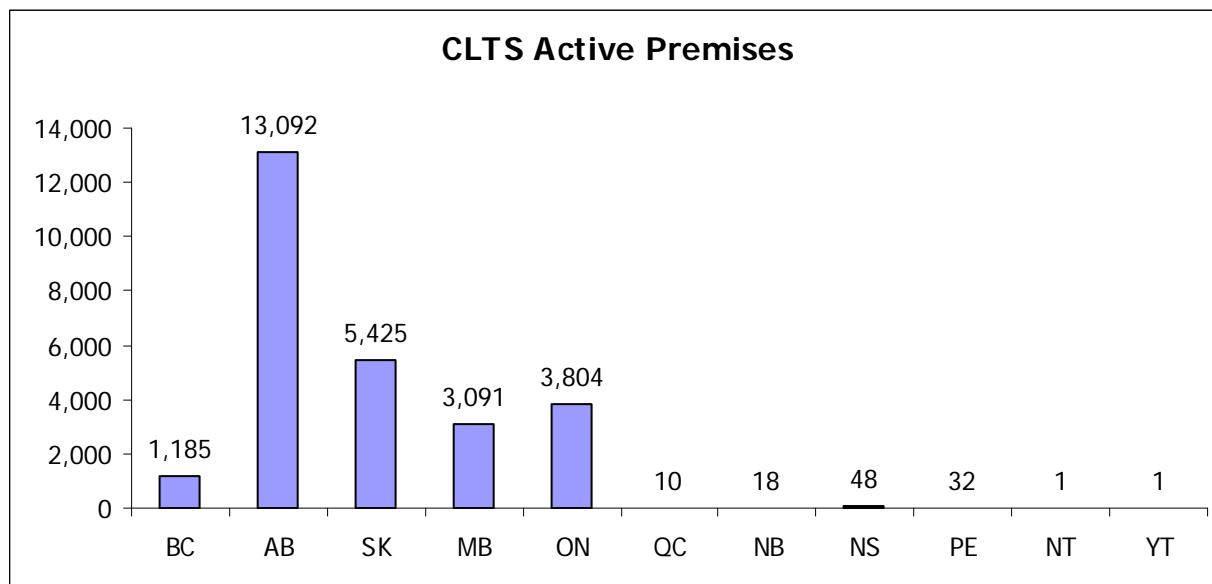
# of producers age verifying												
	BC				AB				SK			
	2008	2009	2010	2011	2008	2009	2010	2011	2008	2009	2010	2011
<b>Bison</b>	1	0	0	0	31	12	14	1	10	5	3	0
<b>Beef</b>	1795	1920	1780	268	13934	14097	13812	1176	2357	3689	3430	274
<b>Dairy</b>	401	391	381	274	462	498	475	350	158	151	130	94

	MB				ON				NB			
	2008	2009	2010	2011	2008	2009	2010	2011	2008	2009	2010	2011
<b>Bison</b>	1	1	1	1	0	0	0	0	0	0	0	0
<b>Beef</b>	1753	3101	3317	702	1891	1724	1117	114	19	35	33	2
<b>Dairy</b>	272	260	257	169	3564	3461	3385	2268	182	174	171	110

	NS				PE				NL			
	2008	2009	2010	2011	2008	2009	2010	2011	2008	2009	2010	2011
<b>Bison</b>	0	0	0	0	0	0	0	0	0	0	0	0
<b>Beef</b>	10	18	19	3	14	9	18	2	0	1	0	0
<b>Dairy</b>	184	179	174	121	174	160	159	105	6	9	11	5

This information is provided for reference purposes only and was accurate at the time of publication. The Canadian Cattle Identification Agency (CCIA) is not responsible for any reliance on this information. Any distribution, duplication or disclosure of this information is strictly prohibited unless expressly authorized by the CCIA.

## CLTS Statistics- As of January 31, 2011



Number of Active Premises Registered in the CLTS- Monthly											
<b>As of Dec 31, 2010</b>	<b>1,181</b>	<b>13,086</b>	<b>5,398</b>	<b>3,040</b>	<b>3,746</b>	<b>9</b>	<b>18</b>	<b>48</b>	<b>32</b>	<b>1</b>	<b>1</b>
<b>Jan</b>	<b>4</b>	<b>6</b>	<b>27</b>	<b>51</b>	<b>58</b>	<b>1</b>	<b>0</b>	<b>0</b>	<b>0</b>	<b>0</b>	<b>0</b>

This information is provided for reference purposes only and was accurate at the time of publication. The Canadian Cattle Identification Agency (CCIA) is not responsible for any reliance on this information. Any distribution, duplication or disclosure of this information is strictly prohibited unless expressly authorized by the CCIA.

## CLTS Statistics- As of January 31, 2011

The charts below include both dairy and beef calves.

Region	Stats Canada # of 2008 calves as of July 1, 2008	CLTS- # of 2008 calves AV'd as of Jan 31, 2011	% of herd Age Verified
BC	270,000	202,631	75.05%
AB	2,002,000	1,577,984	78.82%
SK	1,346,000	336,458	25.00%
MB	575,000	194,020	33.74%
ON	498,500	184,107	36.93%
NB	23,900	5,482	22.94%
NS	28,300	5,564	19.66%
PE	19,300	4,664	24.17%
NL	2,600	330	12.69%
<b>Canada</b>	<b>4,765,600</b>	<b>2,511,240</b>	<b>52.70%</b>

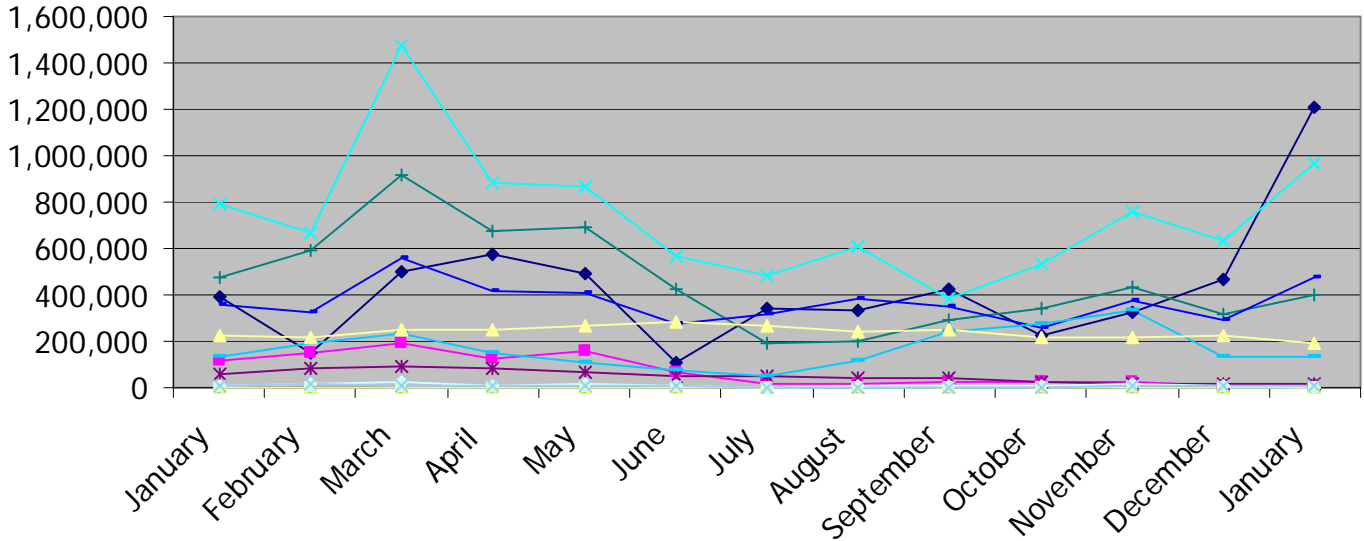
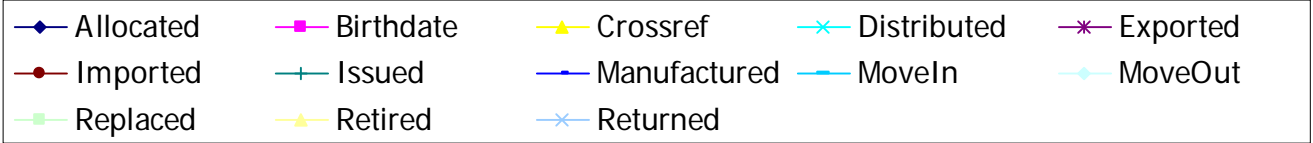
Region	Stats Canada- # of 2009 calves as of July 1, 2009	CLTS # of 2009 calves AV'd as of Jan 31, 2011	% of herd Age Verified
BC	246,000	172,137	69.97%
AB	1,935,000	1,417,157	73.24%
SK	1,257,000	477,443	37.98%
MB	527,000	257,676	48.89%
ON	460,300	156,340	33.96%
NB	22,000	5,982	27.19%
NS	22,000	5,163	23.47%
PE	18,000	5,051	28.06%
NL	2,600	378	14.54%
<b>Canada</b>	<b>4,489,900</b>	<b>2,497,327</b>	<b>55.62%</b>

Region	Stats Canada- # of 2010 calves as of July 1, 2010	CLTS # of 2010 calves AV'd as of Jan 31, 2011	% of herd Age Verified
BC	229,200	145,884	63.65%
AB	1,855,000	986,765	53.19%
SK	1,181,000	277,419	23.49%
MB	486,000	142,261	29.27%
ON	458,900	112,982	24.62%
NB	23,000	5,021	21.83%
NS	20,000	4,677	23.39%
PE	16,000	3,880	24.25%
NL	2,400	303	12.63%
<b>Canada</b>	<b>4,271,500</b>	<b>1,679,192</b>	<b>39.31%</b>

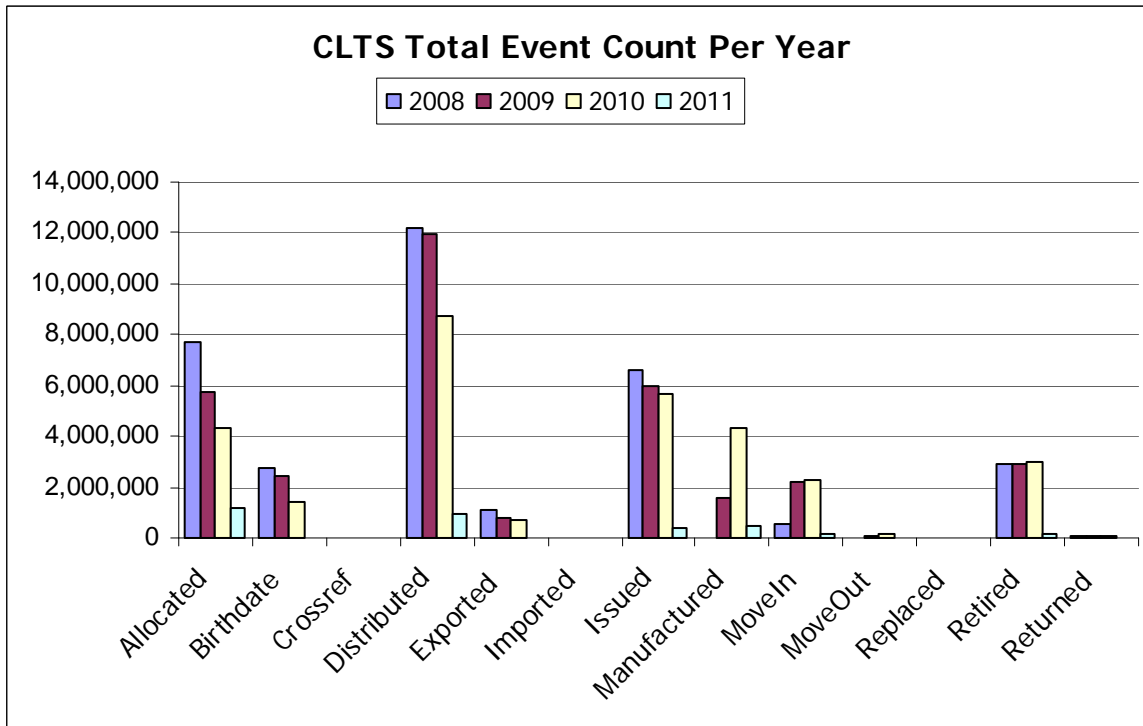
This information is provided for reference purposes only and was accurate at the time of publication. The Canadian Cattle Identification Agency (CCIA) is not responsible for any reliance on this information. Any distribution, duplication or disclosure of this information is strictly prohibited unless expressly authorized by the CCIA.

## CLTS Statistics- As of January 31, 2011

### Event Count by Month Jan 2010-Jan 2011

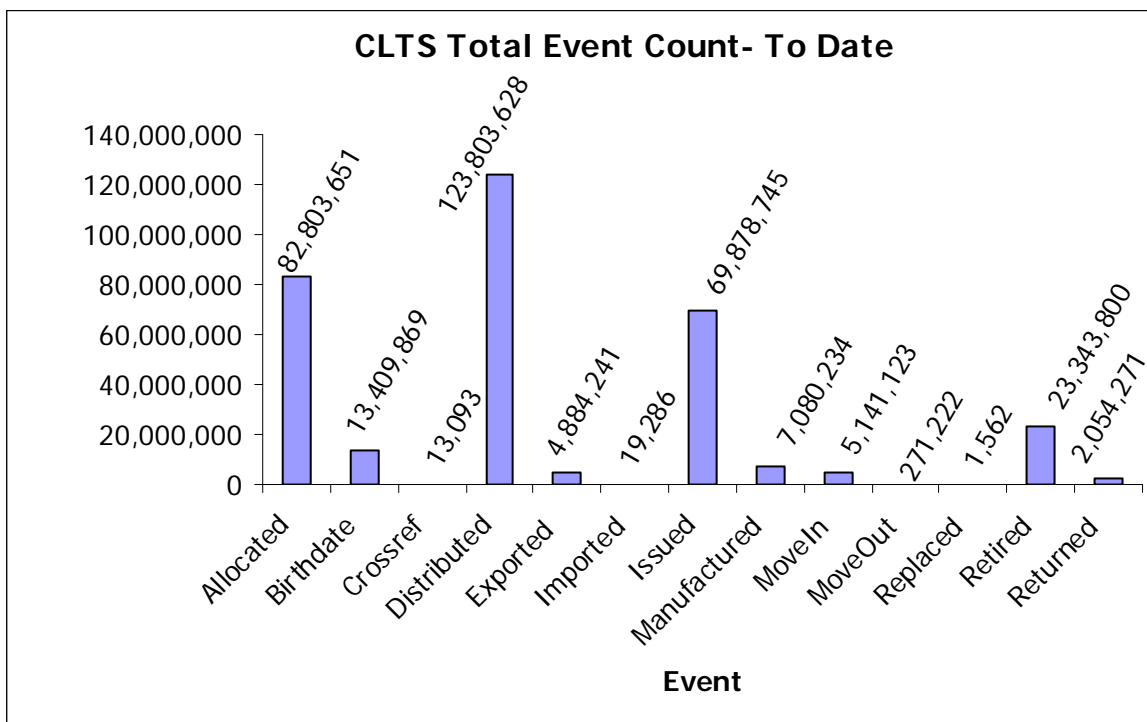


### CLTS Total Event Count Per Year



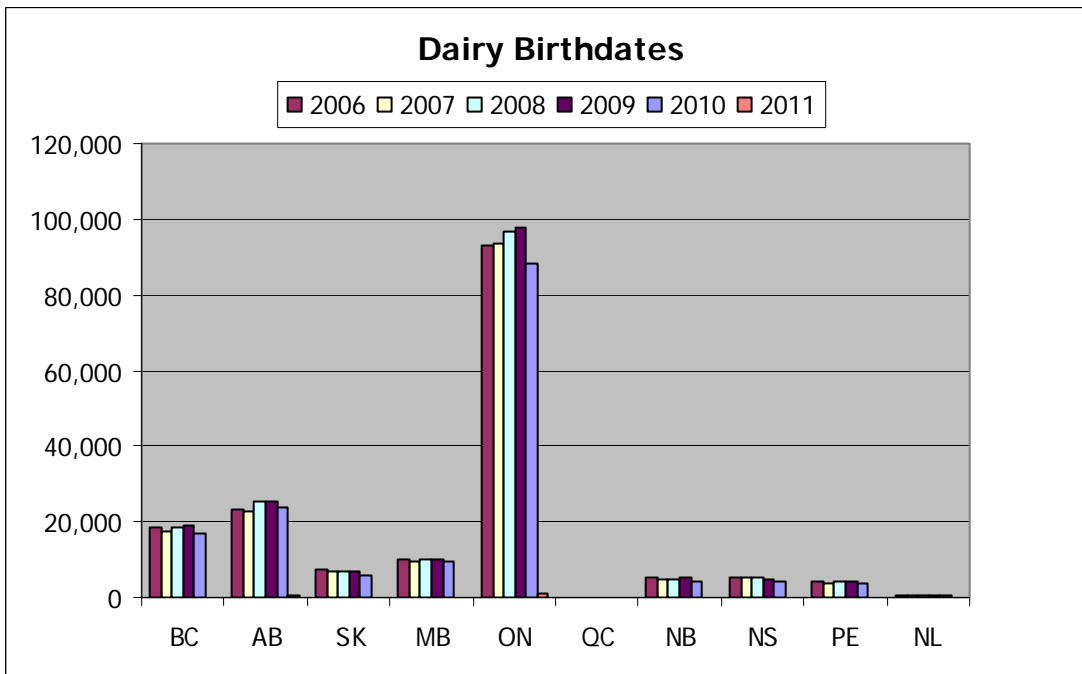
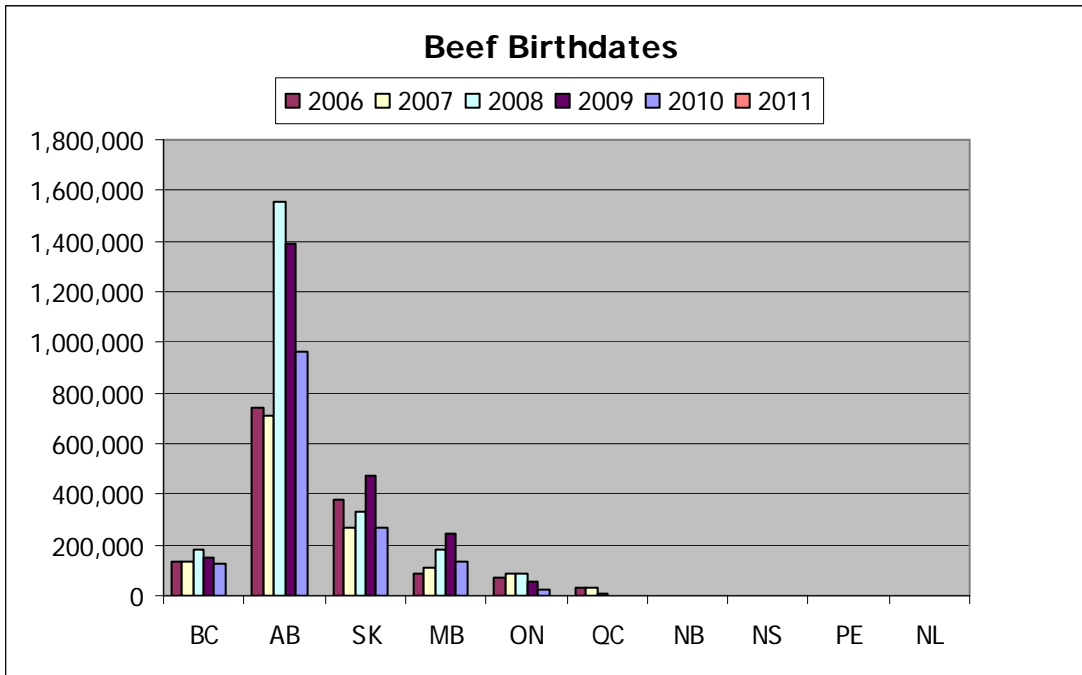
This information is provided for reference purposes only and was accurate at the time of publication. The Canadian Cattle Identification Agency (CCIA) is not responsible for any reliance on this information. Any distribution, duplication or disclosure of this information is strictly prohibited unless expressly authorized by the CCIA.

## CLTS Statistics- As of January 31, 2011



This information is provided for reference purposes only and was accurate at the time of publication. The Canadian Cattle Identification Agency (CCIA) is not responsible for any reliance on this information. Any distribution, duplication or disclosure of this information is strictly prohibited unless expressly authorized by the CCIA.

## CLTS Statistics- As of January 31, 2011



This information is provided for reference purposes only and was accurate at the time of publication. The Canadian Cattle Identification Agency (CCIA) is not responsible for any reliance on this information. Any distribution, duplication or disclosure of this information is strictly prohibited unless expressly authorized by the CCIA.

## CLTS Statistics- As of January 31, 2011

### 2010/2011 Birth Date Comparison

Beef Stats as of January 31, 2010				
	2007	2008	2009	2010
<b>BC</b>	130,756	184,423	128,942	4
<b>AB</b>	706,341	1,556,220	1,077,366	270
<b>SK</b>	266,338	324,893	348,312	0
<b>MB</b>	103,589	177,849	149,785	17
<b>ON</b>	90,311	86,047	44,514	20
<b>QC</b>	20,114	3,106	0	0
<b>NB</b>	455	496	586	0
<b>NS</b>	311	343	151	3
<b>PE</b>	842	457	42	0
<b>NL</b>	0	0	1	0

Beef Stats as of January 31, 2011					
	2007	2008	2009	2010	2011
<b>BC</b>	130,858	184,389	153,095	128,845	8
<b>AB</b>	706,787	1,552,865	1,391,950	963,092	96
<b>SK</b>	267,211	329,608	470,616	271,569	0
<b>MB</b>	107,556	183,883	247,412	132,837	32
<b>ON</b>	90,238	87,431	58,528	24,542	3
<b>QC</b>	31,959	4,856	801	8	0
<b>NB</b>	455	499	724	620	0
<b>NS</b>	311	350	219	238	0
<b>PE</b>	846	576	672	232	0
<b>NL</b>	0	0	1	0	0

Dairy Stats as of January 31, 2010				
	2007	2008	2009	2010
<b>BC</b>	17,153	17,888	16,087	63
<b>AB</b>	22,431	24,591	22,015	50
<b>SK</b>	6,919	6,825	5,939	9
<b>MB</b>	9,148	9,783	8,576	17
<b>ON</b>	92,660	94,670	80,439	252
<b>QC</b>	15	9	2	0
<b>NB</b>	4,708	4,869	4,405	9
<b>NS</b>	5,121	5,137	4,046	5
<b>PE</b>	3,933	4,011	3,441	3
<b>NL</b>	194	244	246	1

Dairy Stats as of January 31, 2011					
	2007	2008	2009	2010	2011
<b>BC</b>	17,384	18,242	19,042	17,039	216
<b>AB</b>	22,820	25,119	25,207	23,673	374
<b>SK</b>	6,929	6,850	6,827	5,850	61
<b>MB</b>	9,408	10,137	10,264	9,424	111
<b>ON</b>	93,388	96,676	97,812	88,440	915
<b>QC</b>	15	11	7	2	0
<b>NB</b>	4,734	4,983	5,258	4,401	32
<b>NS</b>	5,147	5,214	4,944	4,439	59
<b>PE</b>	3,956	4,088	4,379	3,648	26
<b>NL</b>	437	330	377	303	1

This information is provided for reference purposes only and was accurate at the time of publication. The Canadian Cattle Identification Agency (CCIA) is not responsible for any reliance on this information. Any distribution, duplication or disclosure of this information is strictly prohibited unless expressly authorized by the CCIA.