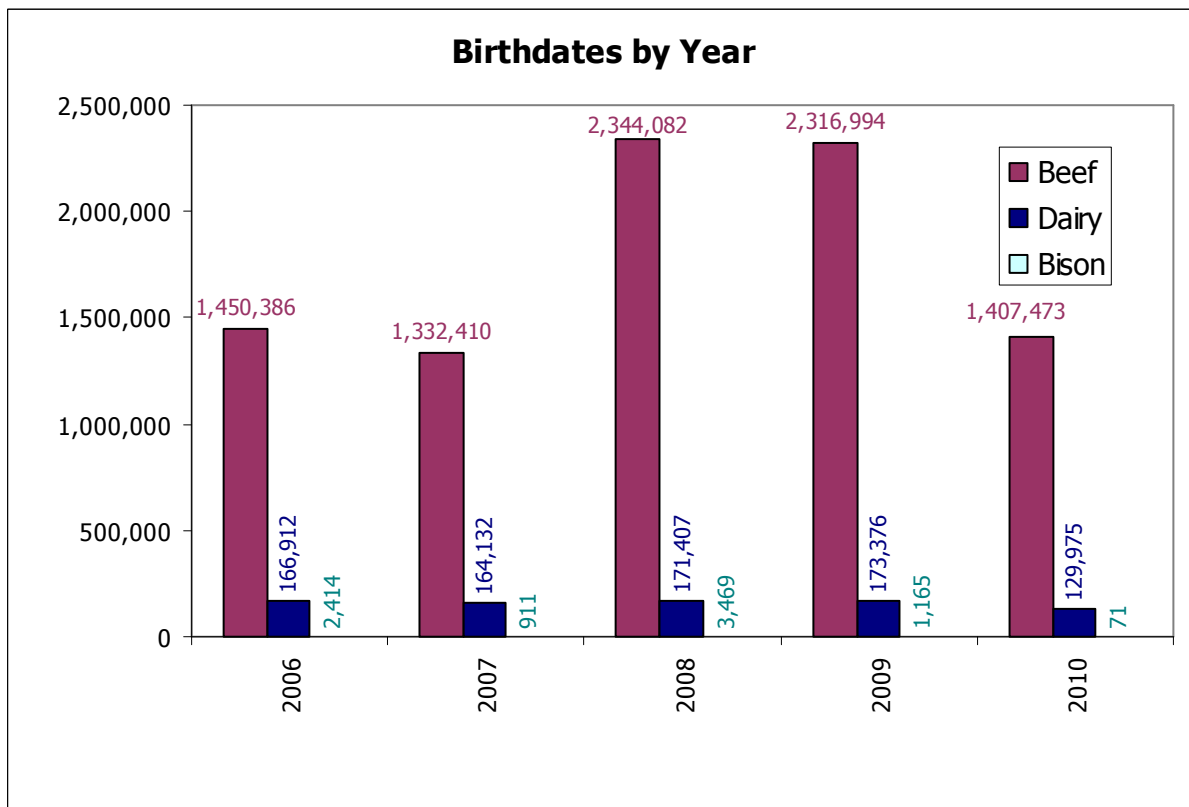


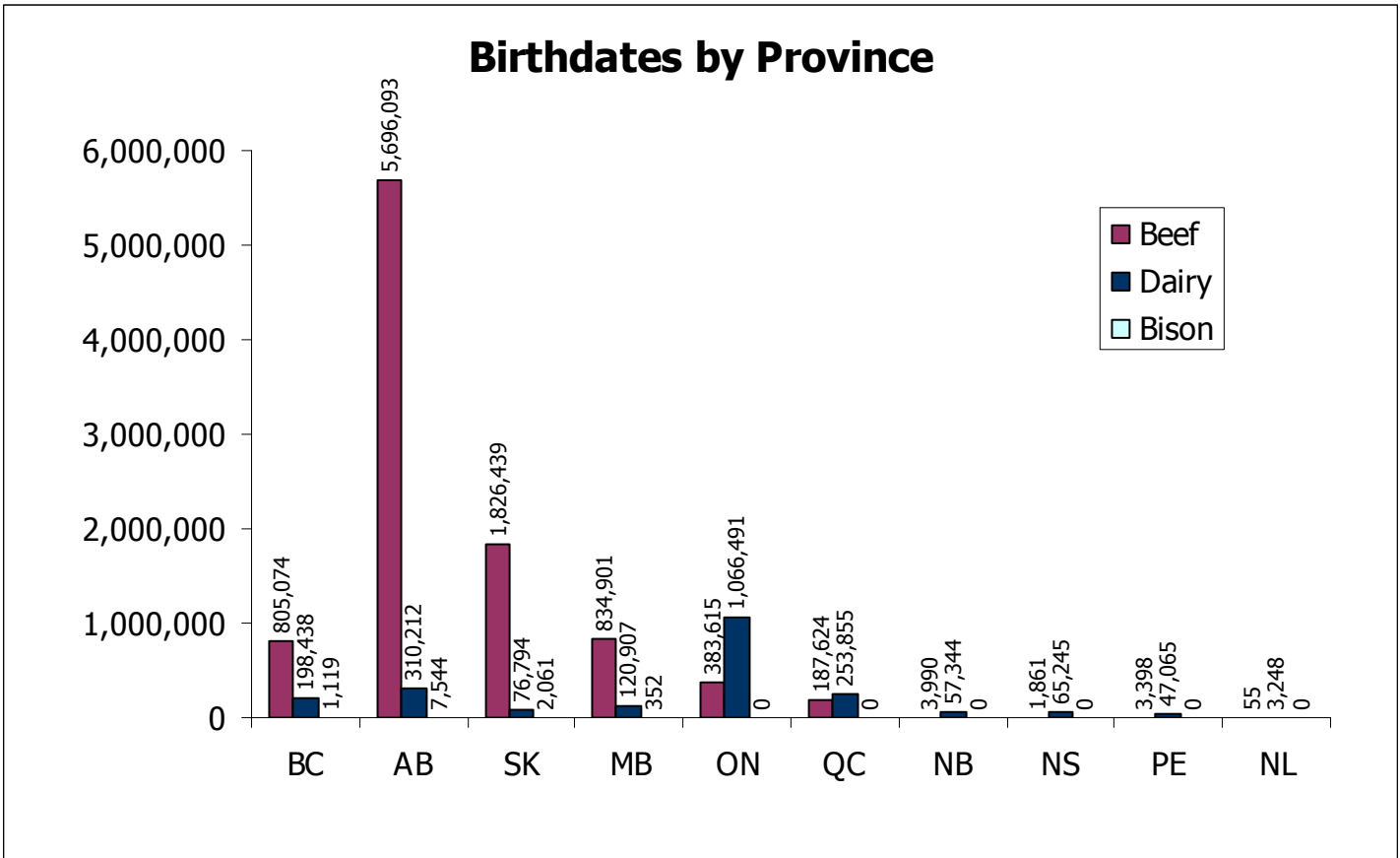
## CLTS Statistics- As of December 31, 2010

Birthdates in Database 11, 954, 664



This information is provided for reference purposes only and was accurate at the time of publication. The Canadian Cattle Identification Agency (CCIA) is not responsible for any reliance on this information. Any distribution, duplication or disclosure of this information is strictly prohibited unless expressly authorized by the CCIA.

## CLTS Statistics- As of December 31, 2010



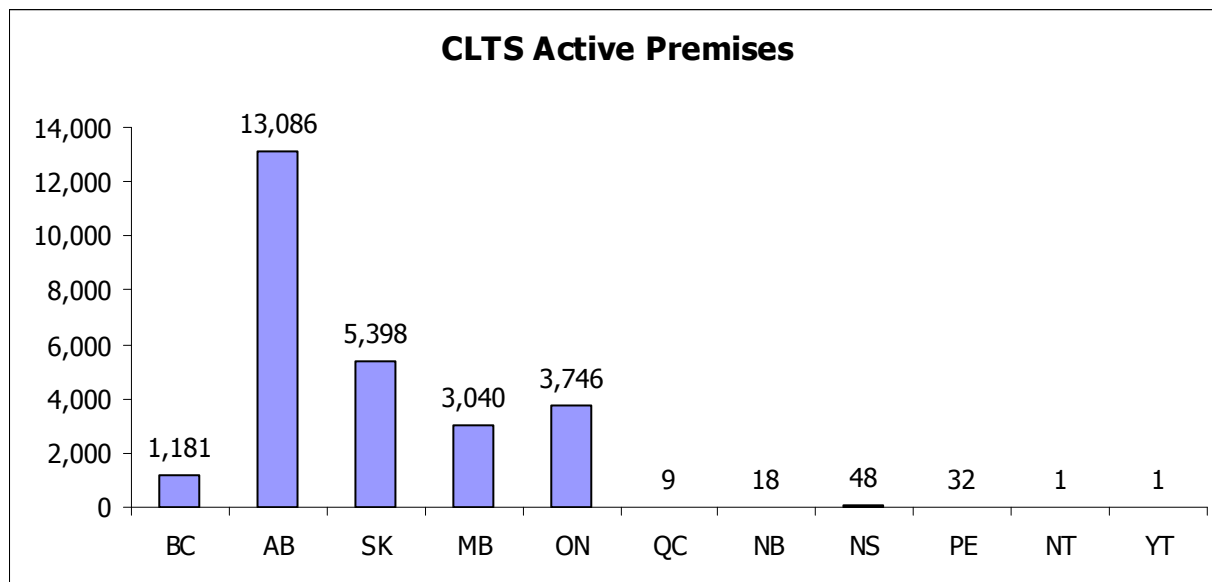
# of producers age verifying												
	BC				AB				SK			
	2007	2008	2009	2010	2007	2008	2009	2010	2007	2008	2009	2010
<b>Bison</b>	1	1	0	0	7	31	12	14	10	10	5	3
<b>Beef</b>	1593	1795	1920	1780	5308	13934	14097	13812	2317	2357	3689	3430
<b>Dairy</b>	451	401	391	381	511	462	498	475	170	158	151	130

	MB				ON				NB			
	2007	2008	2009	2010	2007	2008	2009	2010	2007	2008	2009	2010
<b>Bison</b>	0	1	1	1	0	0	0	0	0	0	0	0
<b>Beef</b>	802	1753	3101	3317	1769	1891	1724	1117	31	19	35	33
<b>Dairy</b>	288	272	260	257	3684	3564	3461	3385	191	182	174	171

	NS				PE				NL			
	2007	2008	2009	2010	2007	2008	2009	2010	2007	2008	2009	2010
<b>Bison</b>	0	0	0	0	0	0	0	0	0	0	0	0
<b>Beef</b>	15	10	18	19	21	14	9	18	0	0	1	0
<b>Dairy</b>	203	184	179	174	184	174	160	159	6	6	9	11

This information is provided for reference purposes only and was accurate at the time of publication. The Canadian Cattle Identification Agency (CCIA) is not responsible for any reliance on this information. Any distribution, duplication or disclosure of this information is strictly prohibited unless expressly authorized by the CCIA.

## CLTS Statistics- As of December 31, 2010



Number of Active Premises Registered in the CLTS- Monthly											
Month	BC	AB	SK	MB	ON	QC	NB	NS	PE	NT	YT
<b>As of Dec 31, 2009</b>	<b>1,150</b>	<b>12,767</b>	<b>5,087</b>	<b>2,941</b>	<b>3,629</b>	<b>9</b>	<b>18</b>	<b>48</b>	<b>30</b>	<b>1</b>	<b>1</b>
Jan	2	34	17	21	1	0	0	0	0	0	0
Feb	0	23	9	9	1	0	0	0	0	0	0
Mar	0	59	20	15	8	0	0	0	0	0	0
Apr	2	38	89	9	7	0	0	0	0	0	0
May	3	25	77	3	0	0	0	0	0	0	0
Jun	2	54	13	1	27	0	0	0	1	0	0
Jul	5	24	5	6	11	0	0	0	0	0	0
Aug	0	0	16	6	20	0	0	0	0	0	0
Sept	5	19	17	12	10	0	0	0	0	0	0
Oct	3	23	13	3	19	0	0	0	0	0	0
Nov	7	19	20	7	10	0	0	0	1	0	0
Dec	2	1	15	7	3	0	0	0	0	0	0

This information is provided for reference purposes only and was accurate at the time of publication. The Canadian Cattle Identification Agency (CCIA) is not responsible for any reliance on this information. Any distribution, duplication or disclosure of this information is strictly prohibited unless expressly authorized by the CCIA.

## CLTS Statistics- As of December 31, 2010

The charts below include both dairy and beef calves.

Region	Stats Canada # of 2008 calves as of July 1, 2008	CLTS- # of 2008 calves AV'd as of Dec 31, 2010	% of herd Age Verified
BC	270,000	202,645	75.05%
AB	2,002,000	1,578,035	78.82%
SK	1,346,000	336,408	24.99%
MB	575,000	193,822	33.71%
ON	498,500	183,921	36.89%
NB	23,900	5,476	22.91%
NS	28,300	5,560	19.65%
PE	19,300	4,659	24.14%
NL	2,600	328	12.62%
<b>Total Canada</b>	<b>4,765,600</b>	<b>2,510,854</b>	<b>52.69%</b>

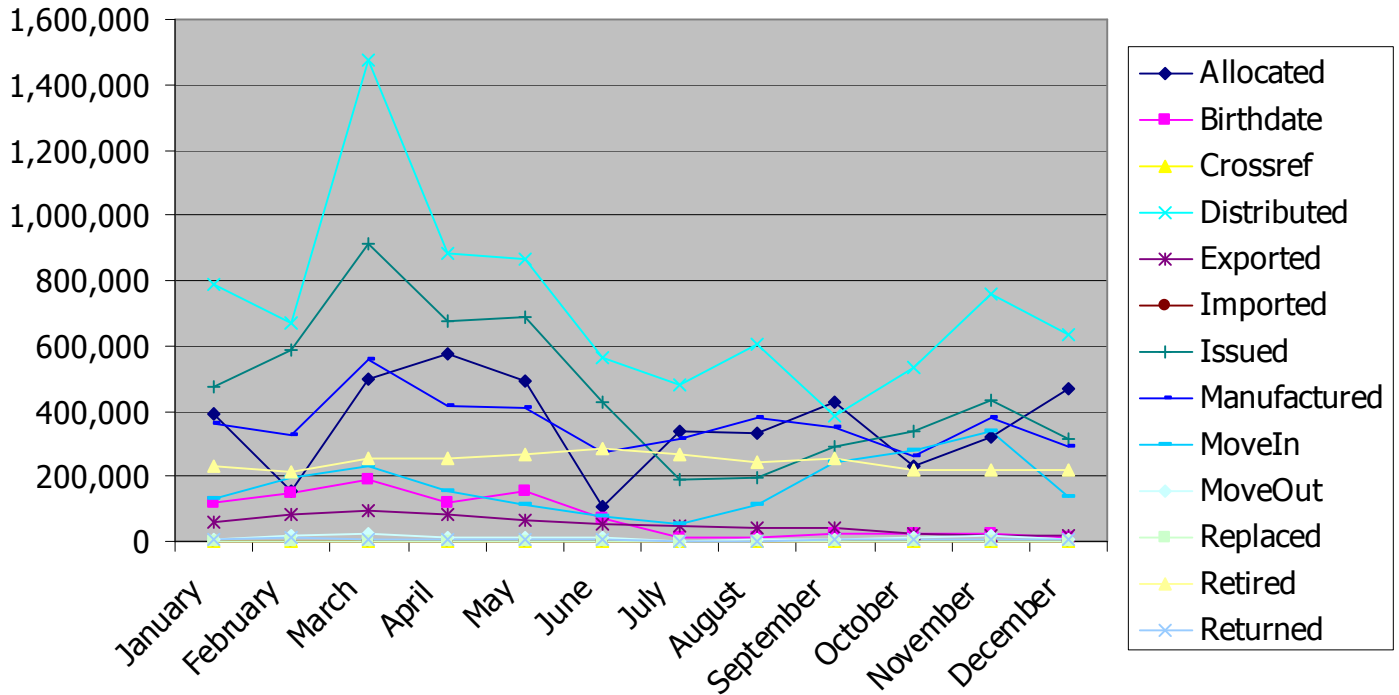
Region	Stats Canada- # of 2009 calves as of July 1, 2009	CLTS # of 2009 calves AV'd as of Dec 31, 2010	% of herd Age Verified
BC	246,000	170,981	69.50%
AB	1,935,000	1,413,534	73.05%
SK	1,257,000	476,750	37.93%
MB	527,000	256,105	48.60%
ON	460,300	155,734	33.83%
NB	22,000	5,938	26.99%
NS	22,000	5,141	23.37%
PE	18,000	5,002	27.79%
NL	2,600	377	14.50%
<b>Canada</b>	<b>4,489,900</b>	<b>2,489,562</b>	<b>55.45%</b>

Region	Stats Canada- # of 2010 calves as of July 1, 2010	CLTS # of 2010 calves AV'd as of Dec 31, 2010	% of herd Age Verified
BC	229,200	138,874	60.59%
AB	1,855,000	914,398	49.29%
SK	1,181,000	257,458	21.80%
MB	486,000	120,296	24.75%
ON	458,900	94,971	20.70%
NB	23,000	4,256	18.50%
NS	20,000	3,774	18.87%
PE	16,000	3,087	19.29%
NL	2,400	268	11.17%
<b>Canada</b>	<b>4,271,500</b>	<b>1,537,382</b>	<b>35.99%</b>

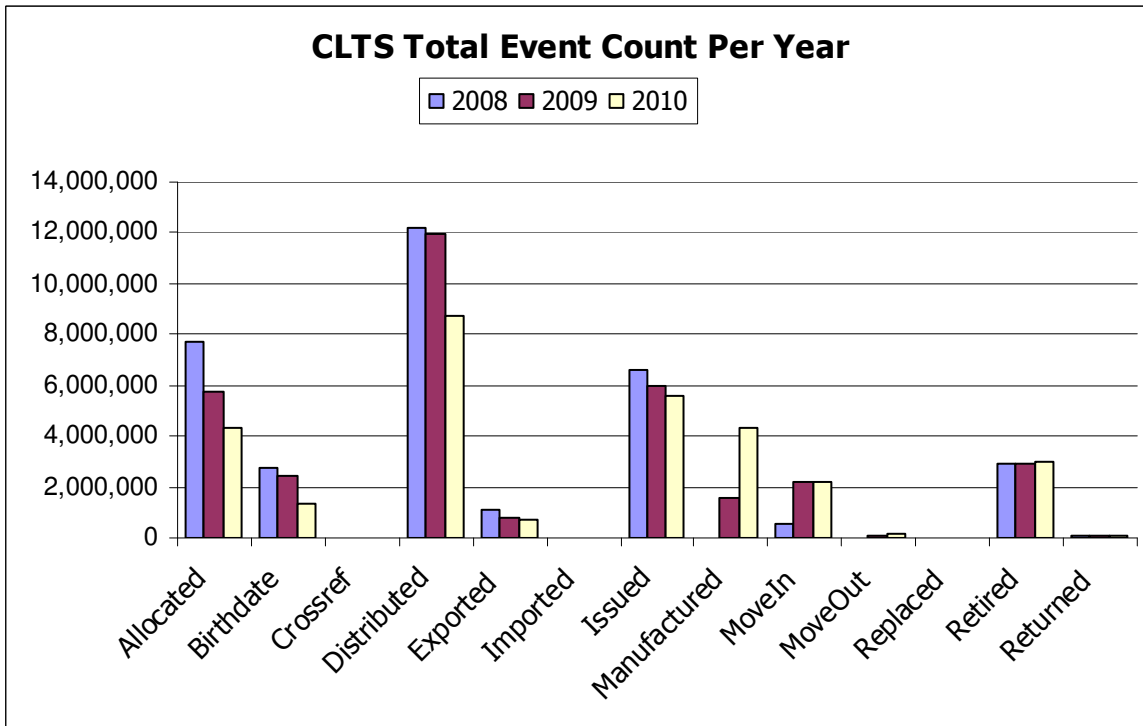
This information is provided for reference purposes only and was accurate at the time of publication. The Canadian Cattle Identification Agency (CCIA) is not responsible for any reliance on this information. Any distribution, duplication or disclosure of this information is strictly prohibited unless expressly authorized by the CCIA.

## CLTS Statistics- As of December 31, 2010

### Event Count by Month 2010

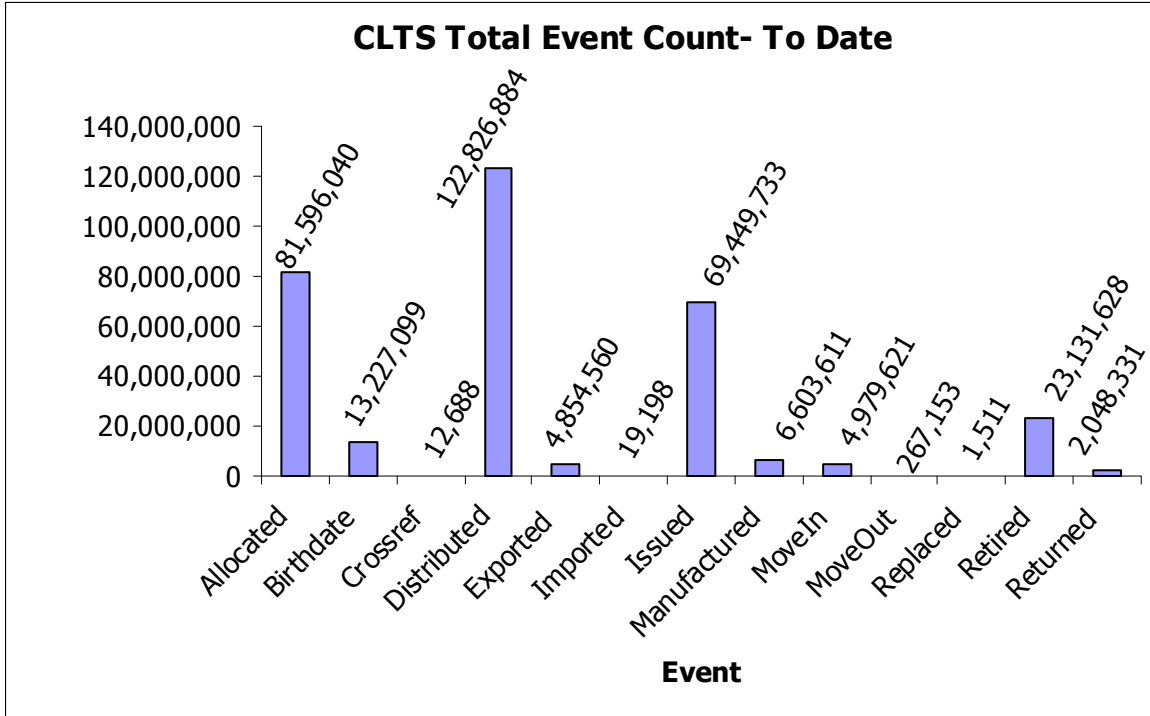


### CLTS Total Event Count Per Year



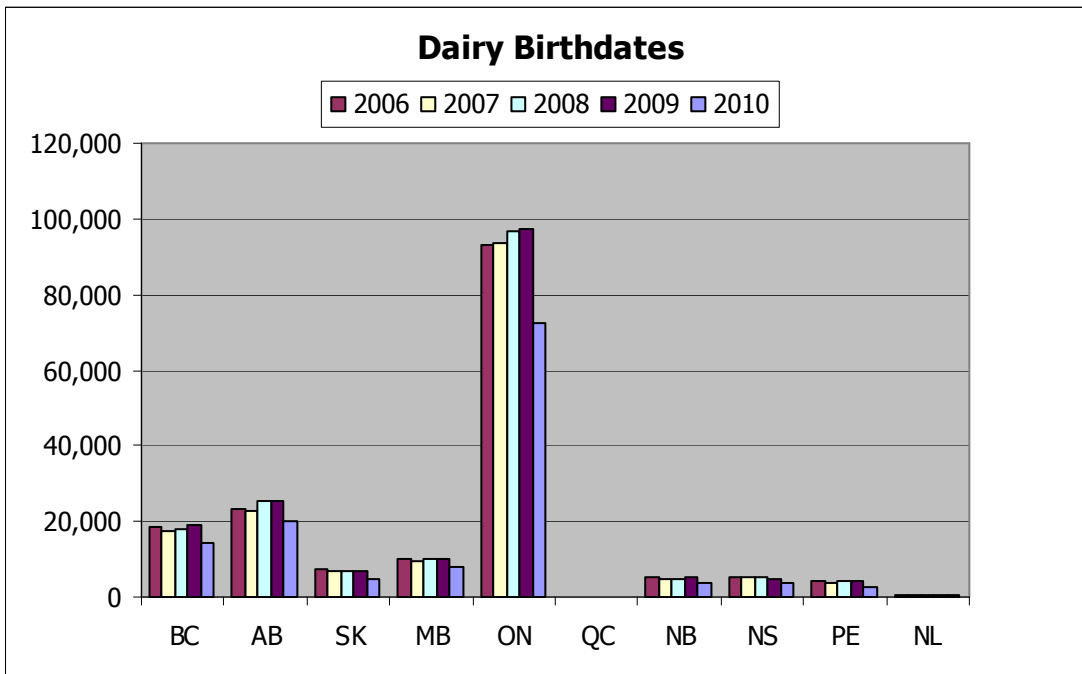
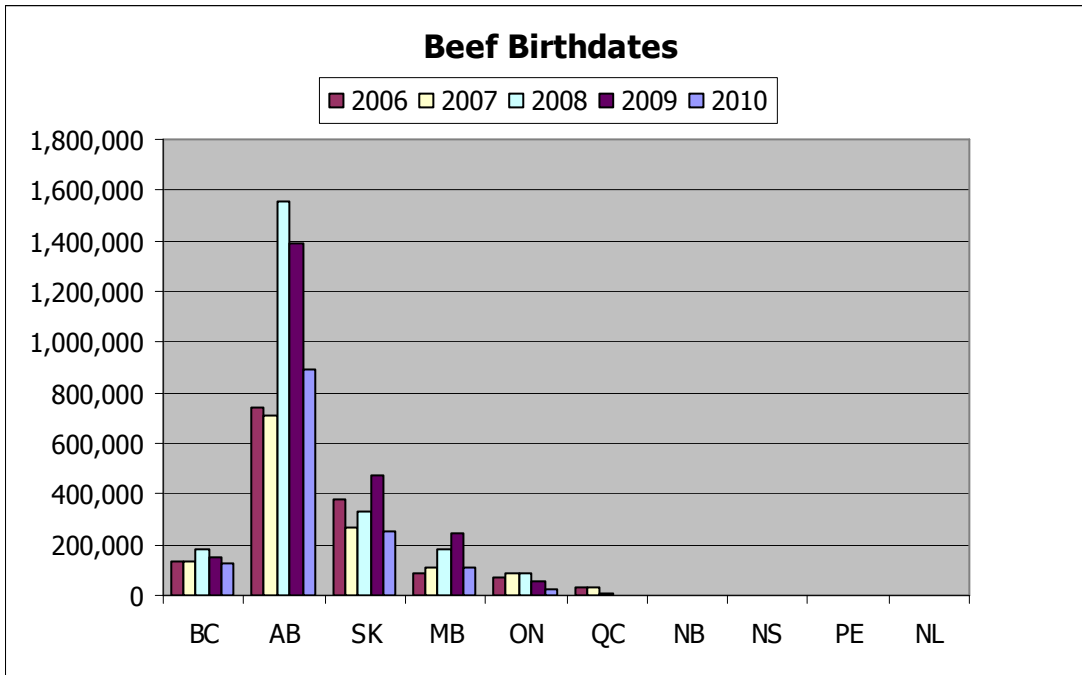
This information is provided for reference purposes only and was accurate at the time of publication. The Canadian Cattle Identification Agency (CCIA) is not responsible for any reliance on this information. Any distribution, duplication or disclosure of this information is strictly prohibited unless expressly authorized by the CCIA.

**CLTS Statistics- As of December 31, 2010**



This information is provided for reference purposes only and was accurate at the time of publication. The Canadian Cattle Identification Agency (CCIA) is not responsible for any reliance on this information. Any distribution, duplication or disclosure of this information is strictly prohibited unless expressly authorized by the CCIA.

## CLTS Statistics- As of December 31, 2010



This information is provided for reference purposes only and was accurate at the time of publication. The Canadian Cattle Identification Agency (CCIA) is not responsible for any reliance on this information. Any distribution, duplication or disclosure of this information is strictly prohibited unless expressly authorized by the CCIA.

## CLTS Statistics- As of December 31, 2010

### 2009/2010 Birth Date Comparison

Beef Stats as of December 31, 2009				
	2006	2007	2008	2009
<b>BC</b>	137,790	130,753	184,380	124,076
<b>AB</b>	740,069	706,704	1,556,319	970,260
<b>SK</b>	377,300	265,967	324,062	319,878
<b>MB</b>	84,071	103,212	176,469	128,761
<b>ON</b>	74,817	90,309	85,939	42,313
<b>QC</b>	19,938	19,089	2,934	0
<b>NB</b>	1,084	455	456	535
<b>NS</b>	369	309	343	102
<b>PE</b>	568	842	440	27
<b>NL</b>	25	0	0	1
<b>NT</b>	0	0	0	0

Beef Stats as of December 31, 2010					
	2006	2007	2008	2009	2010
<b>BC</b>	137,913	130,858	184,408	152,024	124,746
<b>AB</b>	740,029	706,767	1,552,919	1,388,355	894,279
<b>SK</b>	378,357	267,173	329,570	469,946	252,493
<b>MB</b>	87,413	107,349	183,727	245,914	112,353
<b>ON</b>	74,856	90,234	87,410	58,382	22,533
<b>QC</b>	29,690	28,417	4,300	801	8
<b>NB</b>	1,084	455	498	694	608
<b>NS</b>	369	311	350	211	188
<b>PE</b>	650	846	576	666	209
<b>NL</b>	25	0	0	1	0
<b>NT</b>	0	0	324	0	56

Dairy Stats as of December 31, 2009				
	2006	2007	2008	2009
<b>BC</b>	18,258	17,151	17,873	14,847
<b>AB</b>	23,149	22,425	24,580	20,758
<b>SK</b>	7,213	6,910	6,775	5,537
<b>MB</b>	9,930	9,146	9,776	7,984
<b>ON</b>	92,902	92,589	94,488	73,568
<b>QC</b>	60	15	9	2
<b>NB</b>	5,035	4,707	4,868	4,050
<b>NS</b>	5,279	5,121	5,137	3,662
<b>PE</b>	4,128	3,931	4,009	3,069
<b>NL</b>	135	172	208	155
<b>NT</b>	0	0	0	0

Dairy Stats as of December 31, 2010					
	2006	2007	2008	2009	2010
<b>BC</b>	18,358	17,382	18,237	18,957	14,128
<b>AB</b>	23,193	22,819	25,116	25,179	20,119
<b>SK</b>	7,236	6,929	6,838	6,804	4,965
<b>MB</b>	10,038	9,403	10,095	10,191	7,943
<b>ON</b>	93,237	93,327	96,511	97,352	72,438
<b>QC</b>	60	15	11	7	2
<b>NB</b>	5,035	4,727	4,978	5,244	3,648
<b>NS</b>	5,292	5,139	5,210	4,930	3,586
<b>PE</b>	4,136	3,955	4,083	4,336	2,878
<b>NL</b>	327	436	328	376	268
<b>NT</b>	0	0	0	0	0

This information is provided for reference purposes only and was accurate at the time of publication. The Canadian Cattle Identification Agency (CCIA) is not responsible for any reliance on this information. Any distribution, duplication or disclosure of this information is strictly prohibited unless expressly authorized by the CCIA.